

Electrical Specification

Input Rated Voltage :	120 - 277Vac
Input Frequency :	50/60 Hz
Efficiency :	85% typ. @230Vac
Power Factor :	0.9
Output Voltage :	26 - 38 VDC (Max. no load: 45V)
Output Current :	1050 mADC
Output Power :	40W max.
Protection :	SCP, OVP, OTP



Environmental Characteristics

Working Temperature (ta) :	-40 ~ +55 °C
Environment :	For Dry and/or Damp location
Max. Case Temp. (tc):	80 °C
Lifetime	50,000 hours @ta = 40°C

Dimming Characteristics:

Dimming Method:	1 - 10Vdc for 10 - 100% Dimming range. If no dimming interface is connected, maximum light output (100%) will be achieved. Dimming source current is 275uA.
-----------------	---

Safety

Product Design :	Class II (Building in type)
Regular Standard :	UL 8750 with Class 2 output that base on UL 1310, EN 61347-1, EN 61347-2-13
Approval Safety :	UL, cUL (cULus), CE

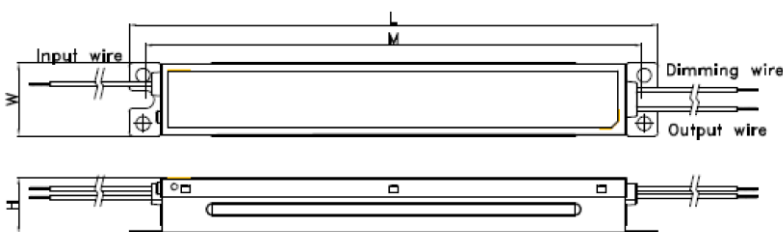
EMC

Emission :	Compliance to EN 55015 / FCC Part 15 Class B ; EN 61000-3-2 Class C ; EN 61000-3-3
Immunity :	Compliance to EN 61547, IEC 61000-4-2,3,4,5,6,8,11 (surge 4KV (L/N))

Mechanical

Dimension (L x W x H) :	241.3 x 33.0 x 25.4 (mm)
Input wires :	L: Black, N: White; UL1316 #18AWG Length: 229 mm
Output wires :	Positive: Red, Negative: Black ; Black UL1316 18AWG Length: 229 mm
Dimming wires:	Dim(+): Violet, Dim(-): Gray; UL1316 #20AWG Length: 229 mm
Enclosure material	Metal

Physical Parameters



L: 241.3mm W: 33.0mm
 H: 25.4mm M: 226.6mm

