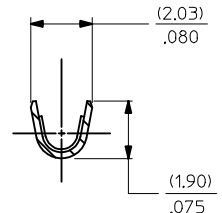
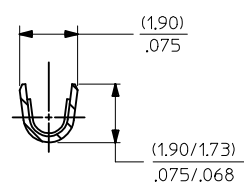
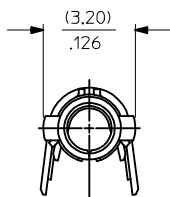
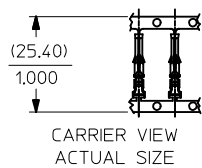


PART NO. ENG. NO.

02-06-1131	1855-(P901)
02-06-1132	1855-(P901)L
02-06-5138	1855-(P561)
02-06-5139	1855-(P561)L
02-06-5130	1855-(P550)
02-06-5135	1855-(P550)L
02-06-5147	1855-(P228)
02-06-5148	1855-(P228)L
02-06-1141	1855-1(P901)
NOT TOOLED	1855-1(P901)L
02-06-1143	1855-(P901)1



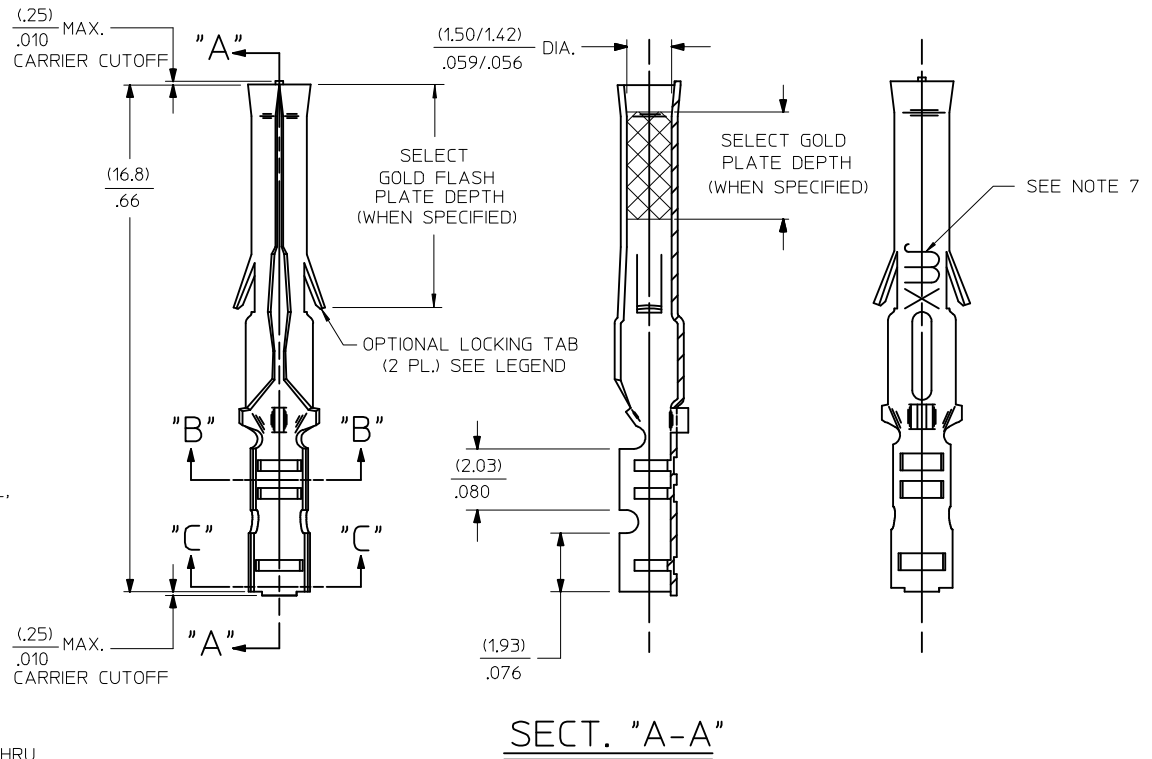
LEGEND

1855-*(****)*

- BLANK=WITH LOCKING TABS
- 1=WITHOUT LOCKING TABS
- P=PREPLATE
- BLANK=POSTPLATE
- FORM
- BLANK=CHAIN
- 1=CHAIN WITH INTERLEAF PAPER ON REEL.
- L=LOOSE
- FINISH CODE

NOTES:

1. MATERIAL: BRASS
2. FINISHES:
 - 901 HOT TIN DIP (.00051)/.000020 MIN.
 - 228 SELECT GOLD PLATE (.00075)/.000030 MIN. IN CONTACT AREA, SELECT TIN (.00250)/.000100 MIN. IN CRIMP AREA OVER (.00125)/.000050 MIN. NICKEL OVERALL, WITH .000010/(0.00025) MAX. SELECT GOLD FLASH IN AREA INDICATED.
 - 561 SELECT GOLD PLATE (.00076)/.000030 MIN. IN CONTACT AREA, (.00127)/.000050 MIN. NICKEL OVERALL.
 - 550 SELECT GOLD PLATE (.00038)/.000015 MIN. IN CONTACT AREA, OVER (.00076)/.000030 MIN. NICKEL OVERALL WITH (.00025)/.000010 MAX. GOLD FLASH OVERALL.
3. PRODUCT SPECIFICATION: PS-02-06
4. PACKAGE INFORMATION: LOOSE TERMINALS: PK-1190-003
CHAIN TERMINALS: NOT AVAILABLE
5. TERMINAL FOR USE WITH (1.57)/.062 DIA. SERIES HOUSINGS AND WILL ACCEPT 24 THRU 30 AWG WIRE WITH (1.02/2.29)/.040/.090 INSULATION DIAMETER.
6. PARTS CONFORM TO CLASS B REQUIREMENTS OF COSMETIC SPECIFICATION PS-45499-002.
7. MARKING MAY VARY ON PARTS. CONSULT FACTORY.



ADD NOTES EC NO: UCP2017-0641 DRW:MK/PPER 2016/09/20 CHKD:JFOX 2016/09/20 APPR:FSM/TH 2016/09/21 REV: AP1	QUALITY SYMBOLS	GENERAL TOLERANCES (UNLESS SPECIFIED)	DIMENSION STYLE IN/MM	SCALE 8:1	DESIGN UNITS INCH	THIRD ANGLE PROJECTION
	▽=0	mm INCH	DRAWN BY DATE GEP 1987/09/17	TITLE CRIMP TERMINAL, FEMALE (1.57)/.062 DIA., BRASS FOR 24 THRU 30 GA. WIRE	molex SD-1855-*	SHEET NO. 1 OF 1
	▽=0	4 PLACES ± --- ± --- 3 PLACES ± --- ± .010 2 PLACES ± 0.25 ± .014 1 PLACE ± 0.35 ± --- 0 PLACE ± ±	CHECKED BY DATE RW 1987/09/17			
	▽=0	ANGULAR ±1/2°	APPROVED BY DATE RAS 1987/09/17	MATERIAL NO. SEE CHART	DOCUMENT NO. SD-1855-*	
DRAFT WHERE APPLICABLE MUST REMAIN WITHIN DIMENSIONS		THIS DRAWING CONTAINS INFORMATION THAT IS PROPRIETARY TO MOLEX INCORPORATED AND SHOULD NOT BE USED WITHOUT WRITTEN PERMISSION				