



**SPECIFICATION:**

Current rating: 1 A  
 Insulation resistance: 1000 MΩ min.  
 Contact resistance: 15 mΩ max.  
 Dielectric voltage: 500 V AC  
 Operation temperature: -55 °C to +105 °C

**MATERIAL:**

Insulator: PBT black UL94V-0  
 Shell: Steel  
 Pins: Brass

**FINISH:**

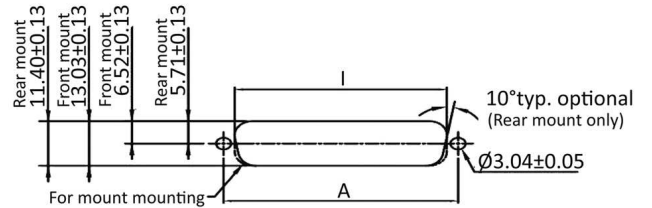
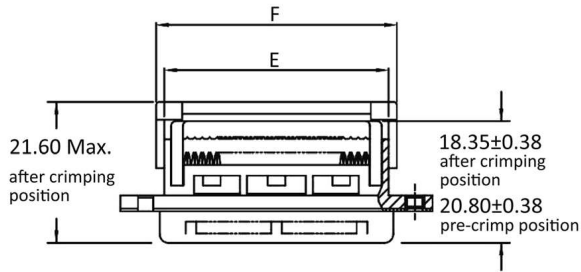
Contacts: Gold plated  
 Shell: Nickel or tin plated

**HANDLING:**

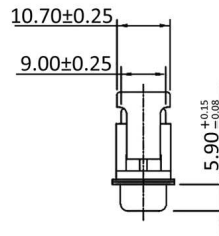
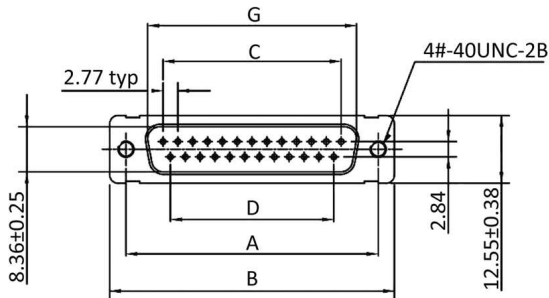
Processing: IDC  
 Packing: Tray

**TOLERANCE:**

.X ± 0.38  
 .XX ± 0.25



Recommended panel cutout dimensions



**Dimensions**

No. of contacts:	A:	B:	C:	D:	E:	F:	G:	I rear:	I front:
9	24.99	30.80	11.08	8.31	16.10	18.60	16.92	20.47	22.20
15	33.32	39.10	19.39	16.62	24.00	26.50	25.25	28.80	30.53
25	47.04	53.09	33.24	30.47	38.14	40.90	38.96	42.52	44.27
37	63.50	69.40	49.86	47.09	54.60	57.10	55.45	59.09	60.73