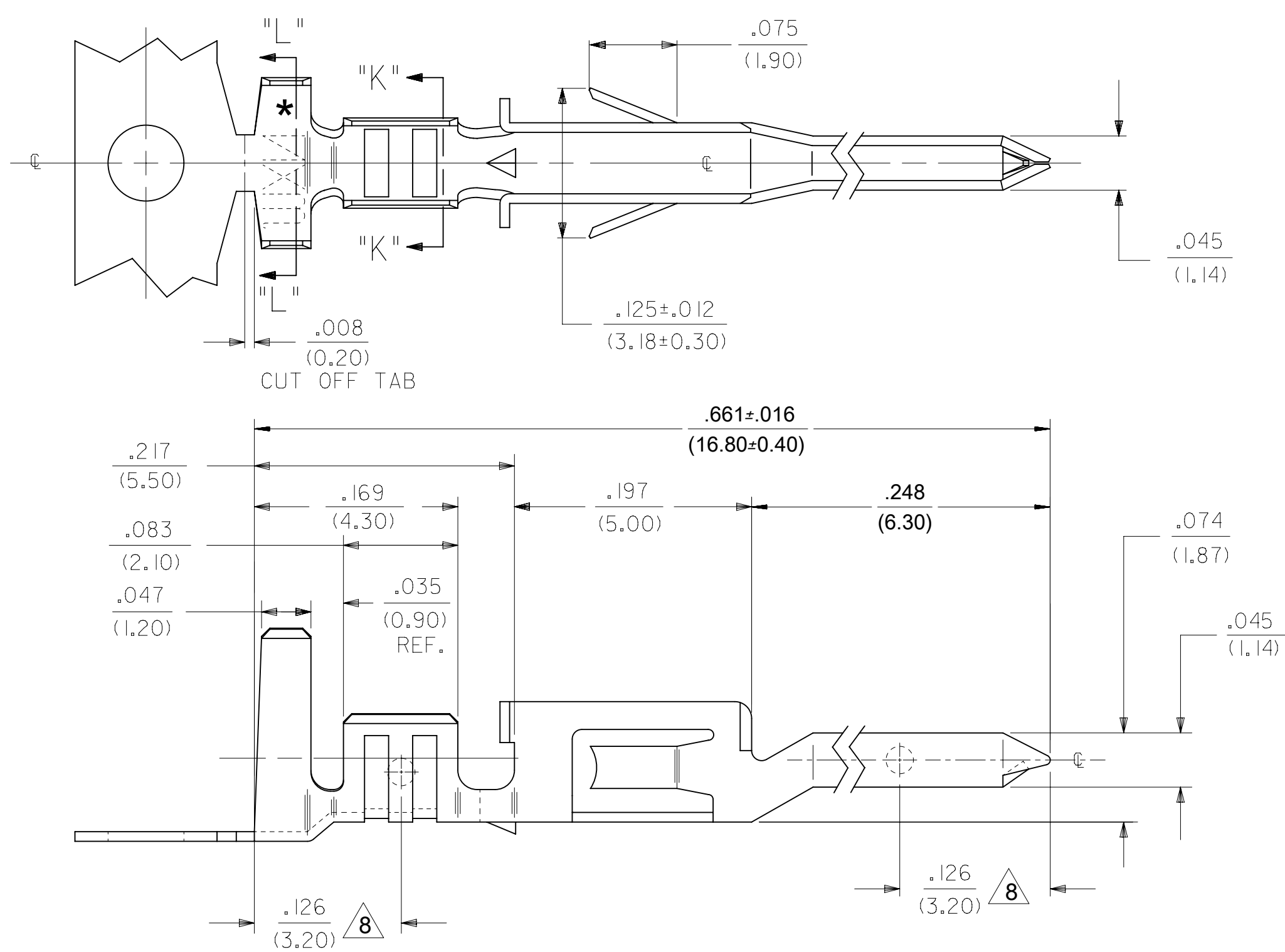
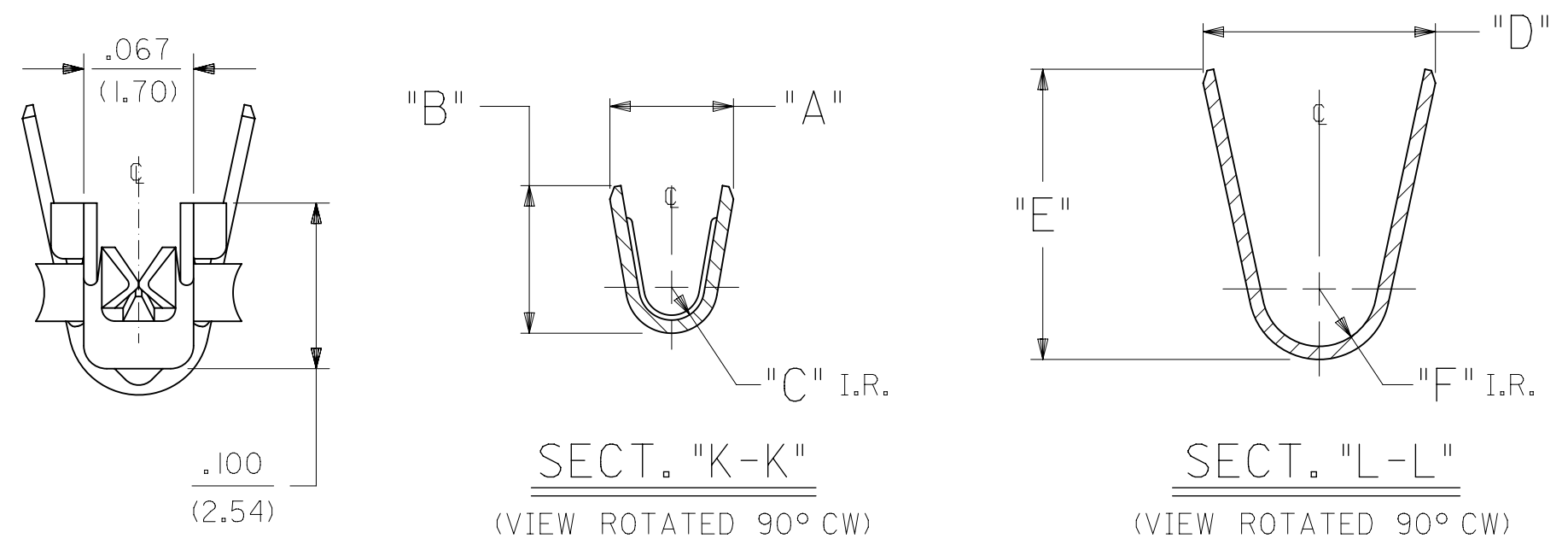


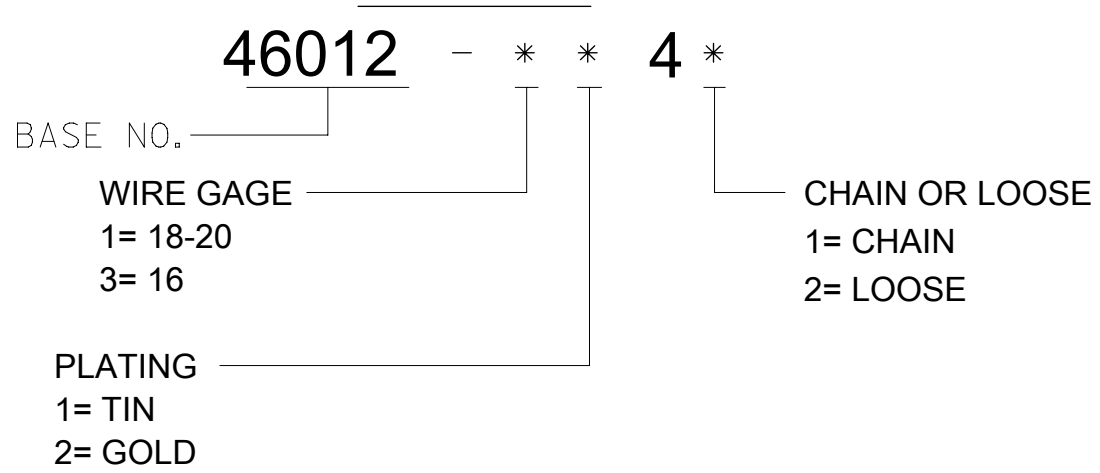
ITEM NO.	FORM	WIRE GAGE	RANGE OF INSULATION DIA.	DIM. "A"	DIM. "B"	DIM. "C"	DIM. "D"	DIM. "E"	DIM. "F"	FINISH (SEE NOTE 2)
46012-1141	CHAIN	18-20 GA.	.051-.122 (1.30-3.10)	.075±.012 (1.90±.30)	.091±.016 (2.30±.40)	.020 (.50)	.142±.012 (3.60±.30)	.177±.016 (4.50±.40)	.035 (.90)	FINISH 1 - BRIGHT TIN OVER NICKEL
46012-1142	LOOSE									
46012-3141	CHAIN	16 GA.	.122 (3.10) MAX.	.091±.012 (2.30±.30)	.106±.016 (2.70±.40)	.024 (.60)	.142±.012 (3.60±.30)	.177±.016 (4.50±.40)	.035 (.90)	
46012-3142	LOOSE									
46012-1241	CHAIN	18-20 GA.	.051-.122 (1.30-3.10)	.075±.012 (1.90±.30)	.091±.016 (2.30±.40)	.020 (.50)	.142±.012 (3.60±.30)	.177±.016 (4.50±.40)	.035 (.90)	FINISH 2 - SEL. GOLD AND SEL. MATTE TIN OVER NICKEL
46012-1242	LOOSE									
46012-3241	CHAIN	16 GA.	.122 (3.10) MAX.	.091±.012 (2.30±.30)	.106±.016 (2.70±.40)	.024 (.60)	.142±.012 (3.60±.30)	.177±.016 (4.50±.40)	.035 (.90)	
46012-3242	LOOSE									



- NOTES:**
- MATERIAL:**
COPPER ALLOY .0080/(.203) THICK.
 - FINISH:**
1= .000100/(0.00254) MIN. BRIGHT TIN OVER .000050/(0.00127) MIN NICKEL OVERALL.
2= .000030/(.00076) MIN SELECT GOLD IN CONTACT AREA AND .000100/(0.00254) MIN SELECT MATTE TIN IN CRIMP AREA OVER .000050/(0.00127) MIN NICKEL OVERALL.
GOLD PLATING RECOMMENDED FOR APPLICATIONS WHERE FRETTING CORROSION IS A CONCERN.
 - PRODUCT SPECIFICATION:** PS-45750-001
 - PACKAGING SPECIFICATION:** PK-46012-001 FOR CHAIN TERMINALS
PK-5556-003 FOR LOOSE TERMINALS.
 - TERMINAL MATES WITH FEMALE TERMINAL SERIES 45750 AND IS FOR USE WITH MOLEX PLUG HOUSINGS 5559, 42475, 43770 AND 30068.**
 - THIS TERMINAL IS DESIGNED FOR SINGLE WIRE CRIMPING.**
 - WHEN TERMINALS ARE INSTALLED IN THE HOUSINGS, THE WIRES ARE TO BE DRESSED IN SUCH A MANNER TO ALLOW THE TERMINALS TO FLOAT FREELY IN THE POCKETS.**
 - MEASURING POINT FOR PLATING THICKNESS.**



LEGEND:



QUALITY SYMBOLS		THIS DRAWING CONTAINS INFORMATION THAT IS PROPRIETARY TO MOLEX ELECTRONIC TECHNOLOGIES, LLC AND SHOULD NOT BE USED WITHOUT WRITTEN PERMISSION									
▽ = 0	▽ = 0	GENERAL TOLERANCES (UNLESS SPECIFIED) IN/MM SCALE 10:1 DRWN BY TGREGORI DATE 2005/07/28 CHK'D BY GPOLGAR DATE 2005/07/28 APPR BY JCOMERCI DATE 2005/07/28	molex TERM., MALE, CRIMP MINI-FIT JR. HCS PLUS SERIES PRODUCT CUSTOMER DRAWING								
▽ = 0	DIMENSION UNITS: IN/MM SCALE: 10:1 DRWN BY: TGREGORI DATE: 2005/07/28 CHK'D BY: GPOLGAR DATE: 2005/07/28 APPR BY: JCOMERCI DATE: 2005/07/28					SERIES: 46012 MATERIAL NUMBER: SEE CHART CUSTOMER: GENERAL MARKET					
▽ = 0									DOCUMENT NUMBER: SD-46012-001 DOC TYPE: PSD DOC PART: 001 SHEET NUMBER: 1 OF 1		
▽ = 0											
▽ = 0	EC NO: 119412 DRWN: ZHARPER CHKD: JBELL REV / APPR: F SMITH	2017/07/13 2017/07/21 2017/08/01	ANGULAR TOL = 0.5 DRAFT WHERE APPLICABLE MUST REMAIN WITHIN DIMENSIONS		DIMENSION UNITS: IN/MM SCALE: 10:1 DRWN BY: TGREGORI DATE: 2005/07/28 CHK'D BY: GPOLGAR DATE: 2005/07/28 APPR BY: JCOMERCI DATE: 2005/07/28	molex TERM., MALE, CRIMP MINI-FIT JR. HCS PLUS SERIES PRODUCT CUSTOMER DRAWING					
▽ = 0	MIGRATE TO ECTR EC NO: 119412 DRWN: ZHARPER CHKD: JBELL REV / APPR: F SMITH	2017/07/13 2017/07/21 2017/08/01	ANGULAR TOL = 0.5 DRAFT WHERE APPLICABLE MUST REMAIN WITHIN DIMENSIONS		DIMENSION UNITS: IN/MM SCALE: 10:1 DRWN BY: TGREGORI DATE: 2005/07/28 CHK'D BY: GPOLGAR DATE: 2005/07/28 APPR BY: JCOMERCI DATE: 2005/07/28	molex TERM., MALE, CRIMP MINI-FIT JR. HCS PLUS SERIES PRODUCT CUSTOMER DRAWING					