

7

6

5

4

3

2

1

NOTES :

1. MATERIALS :

JACK HOUSING : ZINC ALLOY

IDC MODULE : POLYCARBONATE (PC)

IDC CONTACT : COPPER ALLOY

JAW : ZINC ALLOY

CLIP : ZINC ALLOY

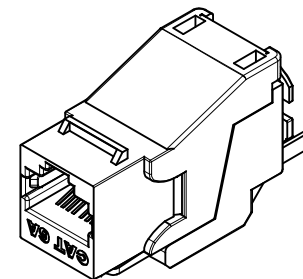
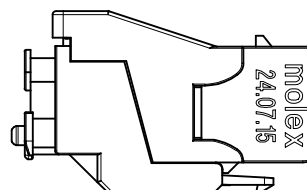
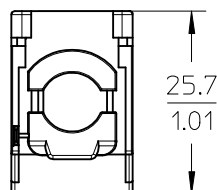
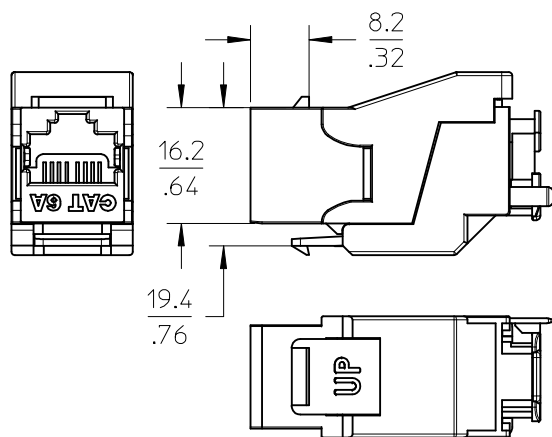
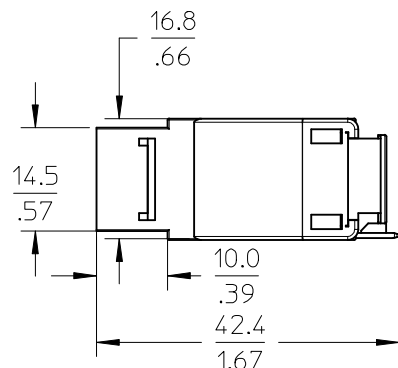
2. FINISH :

CONTACTS: 50 MNCH OF GOLD OVER 70 TO 100 μ INCH OF NICKEL

HOUSING : NICKEL PLATING.

3. PACKAGING :

JACK PACKED INDIVIDUALLY ALONG WITH CABLE TIE IN A POLY BAG WITH LABEL.
ONE INSTRUCTION SHEET FOR A BULK OF 25 JACKS IN A BOX WITH LABEL.



ISO VIEW

MPN NO.	SAP NO.
KSJ-00079	183010070

ENTER DESCRIPTION EC NO: MTS2016-0056 DRW:NBP 2016/03/29 CHKD:RCG 2016/03/30 APPR:RCG 2016/06/27				DESCRIPTION REV		QUALITY SYMBOLS		GENERAL TOLERANCES (UNLESS SPECIFIED)			DIMENSION STYLE MM/IN		SCALE 1:1		DESIGN UNITS METRIC		THIRD ANGLE PROJECTION						
A1		REV		<div><div><div><div><div><div></div><div></div><div></div></div><div></div></div><div><div><div></div><div></div><div></div></div><div></div></div><div><div><div></div><div></div><div></div></div><div></div></div></div><div><div><div></div><div></div><div></div></div><div></div></div><div><div><div></div><div></div><div></div></div><div></div></div></div><div><div><div></div><div></div><div></div></div><div></div></div></div> <div><div><div></div><div></div><div></div></div><div></div></div> <div><div><div></div><div></div><div></div></div><div></div></div> <div><div><div></div><div></div><div></div></div><div></div></div> <div><div><div></div><div></div><div></div></div><div></div></div> <div><div><div></div><div></div><div></div></div><div></div></div>		mm		INCH		DRAWN BY NBP		DATE 2015/06/26		TITLE JACK KEYSTONE CAT 6A SHIELDED									
						4 PLACES		± ---		± ---		CHECKED BY RCG								DATE 2015/07/28			
						3 PLACES		± ---		± ---		APPROVED BY RCG		DATE 2015/08/07		molex							
						2 PLACES		± ---		± ---		MATERIAL NO.		DOCUMENT NO.								SHEET NO.	
						1 PLACE		± ---		± ---		SEE CHART		SD-18301-030								1 OF 1	
						0 PLACE		± ---		± ---		SIZE A 4		THIS DRAWING CONTAINS INFORMATION THAT IS PROPRIETARY TO MOLEX INCORPORATED AND SHOULD NOT BE USED WITHOUT WRITTEN PERMISSION									
						ANGULAR ±1/2°																	
						DRAFT WHERE APPLICABLE MUST REMAIN WITHIN DIMENSIONS																	

6

5

4

3

2

1