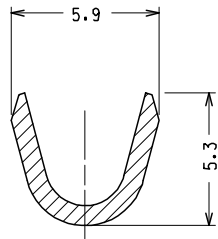
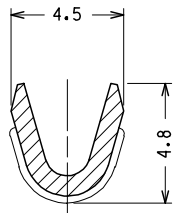


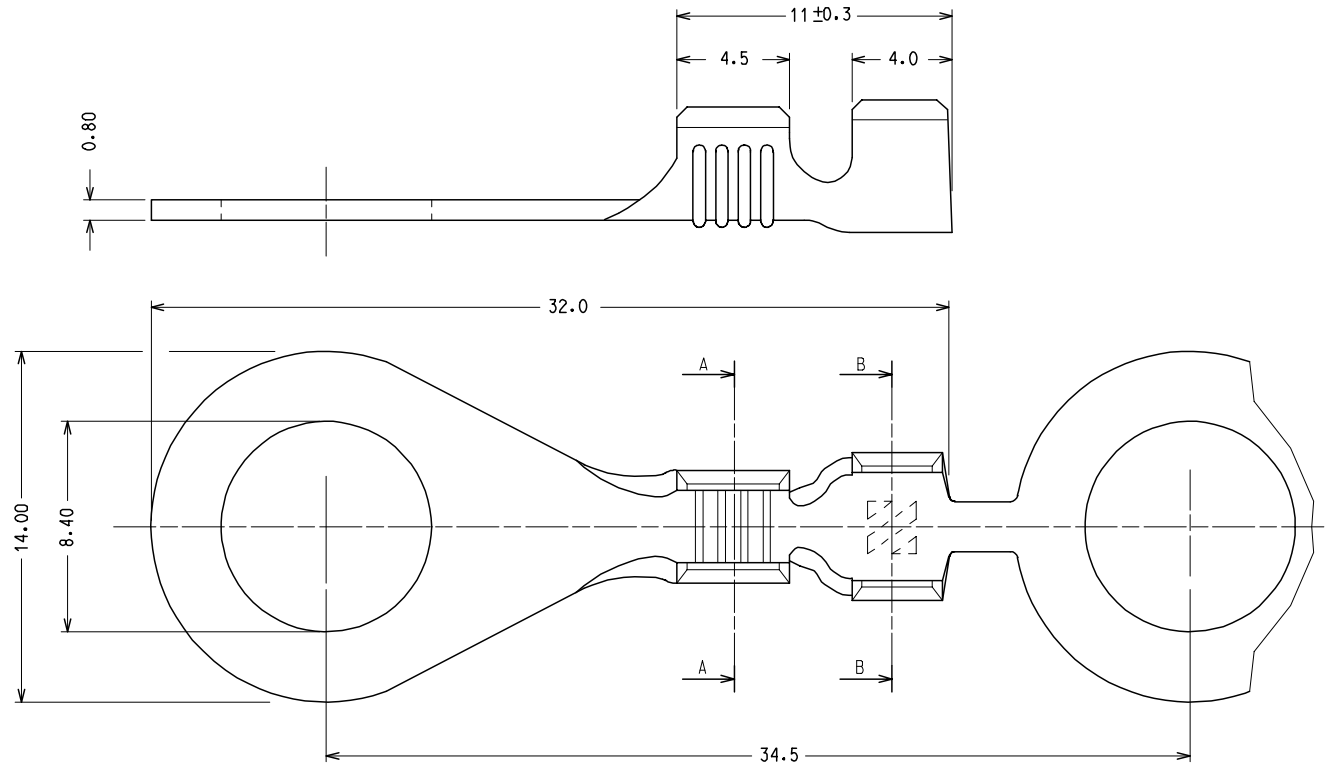
10 9 8 7 6 5 4 3 2 1



SECTION B - B



SECTION A - A



MATERIALE: OTTONE FINITURA: STAGNATO 2-3 μm
 MATERIAL: BRASS PLATING: TIN

S.P.Q. = 6000 pz.

Std. Descr.: RING TONGUE TERM BRS TIN 8.4 D 2-2.5

EC NO: Z2005-0030 DRWN:FGOTTARD 2004/09/23 CHKD:RSANDANO 2004/09/23 APPR:GZUIN 2004/09/23	QUALITY SYMBOLS ▽=0 ▽C=0	GENERAL TOLERANCES (UNLESS SPECIFIED)		DIMENSION STYLE MM ONLY		SCALE 5:1	DESIGN UNITS METRIC	FIRST ANGLE PROJECTION		
			mm	INCH	DRAWN BY FGOTTARD	DATE 1990/02/27	TITLE RING TONGUE TERMINAL WIRE RANGE: 1.0-2.5 MMQ			
		4 PLACES	± ---	± ---	CHECKED BY	DATE				
		3 PLACES	± ---	± ---	APPROVED BY MPREVIAT		DATE 1990/02/27	MOLEX INCORPORATED		
2 PLACES	± 0.1	± ---	MATERIAL NO. 94030-6980		DOCUMENT NO. SD-94030-060	SHEET NO. 1 OF 1				
1 PLACE	± 0.2	± ---	DRAFT WHERE APPLICABLE MUST REMAIN WITHIN DIMENSIONS		THIS DRAWING CONTAINS INFORMATION THAT IS PROPRIETARY TO MOLEX INCORPORATED AND SHOULD NOT BE USED WITHOUT WRITTEN PERMISSION					
ANGULAR ± 2 °										

9 8 7 6 5 4 3 2 1