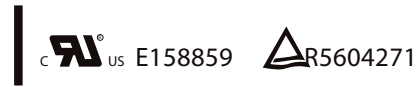


14×9×5



Features
<ul style="list-style-type: none"> • DIL Pitch Terminals .High Sensitivity :0.14W or 0.10W Nominal Power . • Conforms to FCC Part 68 1.5kV Surge and Dielectric 1000V AC . • Monostable or bistable relays Single and double Coil magnet latching Type available . • Application for Telecommunication Equipment,Office Equipment,Security Alarm Systems, Measuring instruments, Medical Monitoring Equipment,Audio Visual Equipment, Flight Simulator,Sensor Control .

Ordering Information
<p><u>P</u> <u>L</u> <u>12</u> <u>W</u> 1 2 3 4</p> <p>1 Part number: P 2 Operating function: NIL: Single Side Stable; L:1 Coil Latching; K:2 Coil Latching</p> <p>3 Coil rated voltage(V) : DC:3,4 .5,5,6, 9,12,24 4 Contact material: NIL: AgPd ; W: AgNi</p>

Contact Data	
Contact Arrangement	2C (DPDT(B-M)) (Bifurcated Cross bar)
Contact Material	AgPd(Gold clad) AgNi(Gold clad)
Contact Rating (resistive)	1A, 2A/30VDC ; 0.5A /125VAC
Max. Switching Power	60W 62.5VA Min. Switching load: 0.01 mA/10mV (Reference Value)
Max. Switching Voltage	220VDC 250VAC Max. Switching Current:2A
Contact Resistance or Voltage drop	≤50mΩ Item 4.12 of IEC 61810-7
Operation life	Electrical 1A /30VDC : 2×10 ⁵ (AgNi: 1×10 ⁵) 0.5A/125VAC : 1×10 ⁵ Item 4.30 of IEC 61810-7
	Mechanical 10 ⁸ Item 4.31 of IEC 61810-7

CAUTION : Relays previously tested or used above 10mA resistive at 6V maximum (DC or peak AC) open circuit are not recommended for subsequent use in low level applications.

Dash numbers	Coil voltage VDC		Coil resistance Ω ±10%	Pick up voltage VDC(max) (75%of rated voltage)	Release voltage VDC(min) (10% of rated voltage)	Coil power W	Operate Time ms	Release /Reset Time ms	
	Rated	Max.							
P-003	3	7.5	64.3	2.25	0.3	0.14	Approx.2	Approx.1	
P-004	4.5	11.25	144.6	3.38	0.45	0.14			
P-005	5	12.5	178	3.75	0.5	0.14			
P-006	6	15.0	257	4.50	0.6	0.14			
P-009	9	22.5	579	6.75	0.9	0.14			
P-012	12	30.0	1028	9.00	1.2	0.14			
P-024	24	48.0	2880	18.0	2.4	0.20			
1 Coil Latching			Reset(Max)			Reset			
PL-003	3	8.7	90	2.25	-2.25	0.10	Approx.2	Approx.1	
PL-004	4.5	13.0	202.5	3.38	-3.38	0.10			
PL-005	5	14.5	250	3.75	-3.75	0.10			
PL-006	6	17.4	360	4.50	-4.50	0.10			
PL-009	9	26.1	810	6.75	-6.75	0.10			
PL-012	12	34.8	1440	9.00	-9.00	0.10			
PL-024	24	57.6	3840	18.0	-18.0	0.15			
2 Coil Latching			Set Coil	Reset Coil	Reset(Max)	Reset			
PK-003	3	6	45	45	2.25	2.25	0.20	Approx.2	Approx.1
PK-004	4.5	9	101	101	3.38	3.38	0.20		
PK-005	5	10	125	125	3.75	3.75	0.20		
PK-006	6	12	180	180	4.50	4.50	0.20		
PK-009	9	18	405	405	6.75	6.75	0.20		
PK-012	12	24	720	720	9.00	9.00	0.20		
PK-024	24	36	1920	1920	18.0	18.0	0.30		

CAUTION: 1.The use of any coil voltage less than the rated coil voltage will compromise the operation of the relay.
2.Pickup and release(reset) voltage are for test purposes only and are not to be used as design criteria.
3.When latching relays are installed in equipment, the latch and reset coil should not be powered simultaneously. Coil should not be pulsed with less than the nominal coil voltage and pulse width should be a minimum of three times the specified operate time of the relay. If these conditions are not followed, it is possible for the relay to be in the magnetically neutral position.

Characteristics

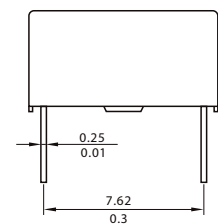
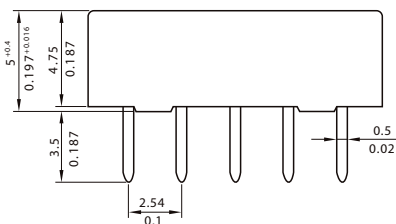
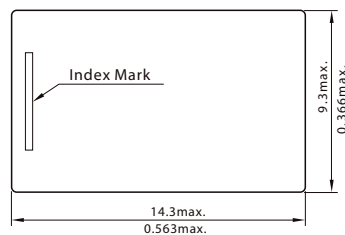
Electrostatic capacitance			
Between open Contacts	Approx.0.4pF	Item	4.41 of IEC 61810-7
Between coil & Contacts	Approx.0.9pF		Item 4.41 of IEC 61810-7
Between Contact Poles	Approx.0.2pF		Item 4.41 of IEC 61810-7
Insulation Resistance	1000M Ω min(at 500VDC)		Item 7 of IEC 60255-5
Dielectric Strength			
Between open Contacts	1000VAC 1min		Item 6 of IEC 60255-5
Between coil & Contacts	1000V AC 1min		Item 6 of IEC 60255-5
Between Contact Poles	1000VAC 1min		Item 6 of IEC 60255-5
Surge Withstand Voltage			
Between open Contacts	1500V	FCC 68	
Between coil & Contacts	1500V	FCC	68
Between Contact Poles	2500V		FCC 68
Shock resistance	Functional:500m/s ² 11ms; Survival:1000 m/s ² 6ms		IEC 68-2-27 Test Ea
Vibration resistance	10Hz~55Hz Double amplitude Functional : 3mm Survival:5mm		IEC 68-2-6 Test Fc
Terminals strength	5N	IEC	68-2-21 Test Ua1
Solderability	235 °C \pm 2°C 3s \pm 0.5s	IEC	68-2-20 Test Ta method 1
Temperature Range	-40 °C~70°C(-40°C~158°C)		
Mass	Approx. 1.5g		

Safety approvals

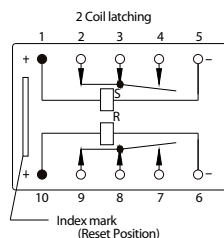
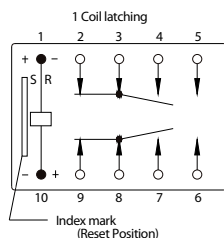
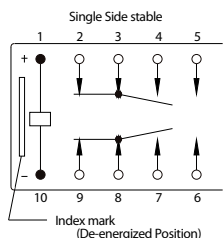
Safety approval	UL&CUR	TW
Load	1A,2A/30VDC, 0.5A/125V AC	1A/30VDC, 0.5A/125V AC

Dimensions

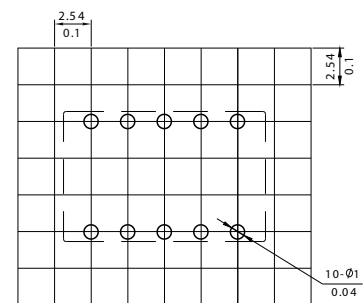
mm/inch



Dimensions



S: Set
R: Reset
(Bottom View)



Tolerance: \pm 0.1/0.004

Mounting (Bottom view)

Wiring diagram
(Bottom view)

NOTES 1).Dimensions are in millimeters.

2).Inch equivalents are given for general information only.