



Part Number : [936010259](#)

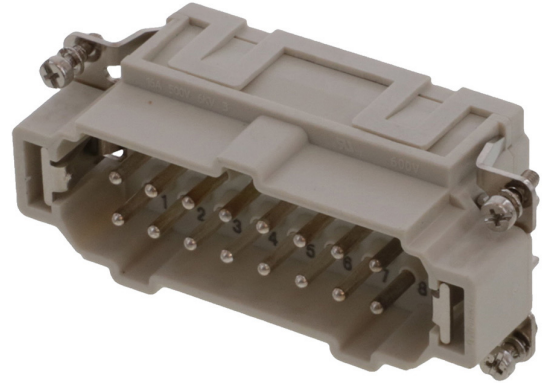
Product Description : GWconnect Spring Terminal Insert, Male, 16-Pole, 16A, Numbered 1-16, Silver (Ag) Plated Contacts, Size 16B «77x27»

Series Number : 93601

Status : Active

Product Category : Heavy-Duty Connectors

Engineering Number : 7316.5953.0



Product Environment Compliance

Compliance

GADSL/IMDS	Not Relevant
China RoHS	
EU ELV	Not Relevant
Low-Halogen Status	Not Reviewed per IEC 61249-2-21
REACH SVHC	Not Contained per D(2022)9120-DC (17 Jan 2023)
EU RoHS	Compliant per EU 2015/863

Multiple Part Product Compliance Statements

- Eu RoHS
- REACH SVHC
- Low-Halogen

Multiple Part Industry Compliance Documents

- IPC 1752A Class C
- IPC 1752A Class D
- Molex Product Compliance Declaration
- IEC-62474
- chemSHERPA (xml)

EU RoHS Certificate of Compliance

ZZCERT_CE - Declaration of Conformity : CER_4000443875_00_000.pdf

ZZCERT_UKCA - Declaration of Conformity : CER_4000443907_00_000.pdf

Part Details

General

Status	Active
Category	Heavy-Duty Connectors
Series	93601
Description	GWconnect Spring Terminal Insert, Male, 16-Pole, 16A, Numbered 1-16, Silver (Ag) Plated Contacts, Size 16B «77x27»
Component Type	Inserts - Spring Terminal
Insert Series	S-ES
Product Family	GWconnect Heavy Duty Connectors (HDC)
Product Name	GWconnect
Standard	CSA C22.2 NO. 182.3, EN 60664-1, EN 61984, UL 1977
UPC	887191879574

Agency

CSA	256883
UL	E249674

Electrical

Current - Maximum per Contact	16.0A
Voltage - Maximum	500V

Physical

Component Size	16B «77X27»
Durability (mating cycles max)	500
Gender	Male
Insert Color	Grey
Material - Contact	Copper Alloy
Material - Insert	Polycarbonate
Material - Plating	Silver
Net Weight	82.000/g
Number of Rows	2

Packaging Type	Bag
Polarized to Mating Part	Yes
Poles	16
Stripping Length	9.00-11.00mm
Temperature Range - Operating	-40° to +125°C
Wire Size (AWG)	14-26
Wire Size mm ²	0.14-2.50

Mates With / Use With

Mates with Part(s)

Description	Part Number
GWconnect Spring Terminal Insert, Female, 16-Pole, 16A, Numbered 1-16, Silver (Ag) Plated Contacts, Size 16B «77x27»	<u>0936010255</u>

Use with Part(s)

Description	Part Number
Use With	Size 16B «77x27» Hoods and Housings