



Part Number : 936040111

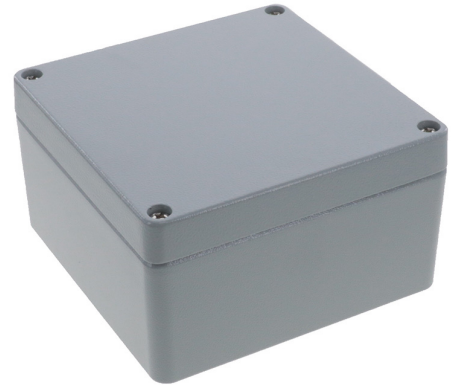
Product Description : GWconnect Enclosure, Die-cast Aluminum, S-8100 Series, without External Mounting Flanges, 160 x 160 x 90mm Outside Dimensions, Grey RAL 7001

Series Number : 93604

Status : Active


Product Category : Die-cast Enclosures

Engineering Number : 8100.8019.0



Product Environment Compliance

Compliance

GADSL/IMDS	Not Relevant
China RoHS	
EU ELV	Not Relevant
Low-Halogen Status	Low-Halogen per IEC 61249-2-21
REACH SVHC	Not Contained per D(2023)3788-DC (14 Jun 2023)
EU RoHS	Compliant per EU 2015/863

Multiple Part Product Compliance Statements

- Eu RoHS
- REACH SVHC
- Low-Halogen

Multiple Part Industry Compliance Documents

- IPC 1752A Class C
- IPC 1752A Class D
- Molex Product Compliance Declaration
- IEC-62474
- chemSHERPA (xml)

EU RoHS Certificate of Compliance

ZZCERT_CE - Declaration of Conformity : CER_4000443225_00_000.pdf

ZZCERT_UKCA - Declaration of Conformity : CER_4000443226_00_000.pdf

Part Details

General

Status	Active
Category	Die-cast Enclosures
Series	93604
Description	GWconnect Enclosure, Die-cast Aluminum, S-8100 Series, without External Mounting Flanges, 160 x 160 x 90mm Outside Dimensions, Grey RAL 7001
IP Rating	IP66, IP69
Product Family	GWconnect Heavy Duty Connectors (HDC)
Product Name	GWconnect
Standard	ANSI/UL 50, ANSI/UL 50 E, CSA C22.2 No.94-1-2, EN 62208, NEMA ICS5, NEMA250, NMX-J235/1-2
Type	STD
UPC	887191873862

Physical

Enclosure Coating	Polyester Powder
Enclosure Color	Grey RAL 7001
Internal Dimensions	151 x 151 x 84mm
Material - Enclosure	Die-cast Aluminum
Mounting Style	Internal Through Holes
Net Weight	1595.000/g
Outside Dimensions	160 x 160 x 90mm
Packaging Type	Carton
Temperature Range - Operating	-40° to +125°C

Use with Part(s)

Description	Part Number
Use With	DIN-rails, mounting supports, fixing screws, metal plates, and ground terminals

This document was generated on Aug 11, 2023