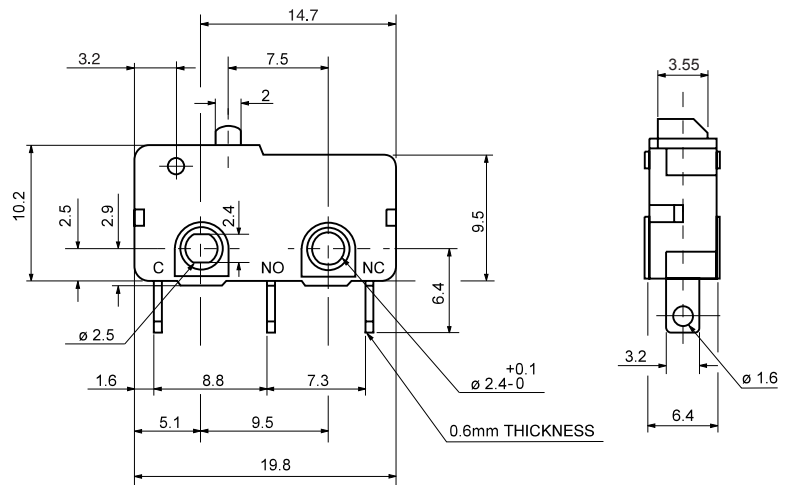


- **SERIES SM-05**
- **SERIES SM-10**

■ **DIMENSIONS** (Unless otherwise specified, a tolerance of $\pm 0.4\text{mm}$ applies to all dimensions.)



■ SPECIFICATIONS

- Operating frequency (mechanical) 120 operations/min
(electrical) 10~30 operations/min
- Contact resistance (initial) 30m Ω Max.
- Insulation resistance (at 500VDC) 100M Ω Min.
- Dielectric strength AC 1,000V RMS (50-60HZ)
- Storage temperature -25°C to +85°C
- Storage humidity 85% RH Max.
- Service life
Electrical (at rated load, depend on type)
..... 6,000 ~ 100,000 operations (depend on type)
Mechanical 10,000,000 operations Min.

■ FEATURES

- Small Compact Size
- Customer Designs
- Rock Wipe Contact Action
- Integral Hinged Actuator
- Long Life Coil Spring Mechanism

■ CONTACT CONFIGURATION



■ APPLICATION

Telephone, air conditioner, computer, humidifier, alarm, time recorder, mixer & chopper, solder gun, neon phone, fax machine, joystick, water pump, gas detector, pencil sharpener, money sorter, food processor, electric knife, toy car, juice maker, light, electric steak pan.

■ RATINGS

SM-05 5A 125VAC (5A 250VAC)
SM-10 10.1A 125VAC (10.1A 250VAC)

■ OPERATING CHARACTERISTICS

ACTUATOR TYPES	PART SUFFIX	OF Max. (g)	OP (mm)	PT Max. (mm)	OT Min. (mm)	MD Max. (mm)	FP Max. (mm)	RF Min. (g)
	-00A	H 249	11.4±0.3	1.1	0.4	0.2	12.2	50
		S 146						35
		L 104						20
	-01A	H 60	11.8±0.8	3.6	0.6	0.8	14.6	15
		S 35						10
		L 25						6
	-02A	H 55	11.8±0.9	4.0	0.6	0.8	14.9	13
		S 33						8
		L 25						6
	-03A	H 45	11.8±1.5	6.1	0.8	1.5	16.4	13
		S 25						6
		L 20						5
	-04A	H 56	13.7±1.0	4.6	0.8	0.8	17.3	13
		S 34						8
		L 25						5
	-05A	H 60	17.5±0.8	3.8	0.8	0.8	20.5	15
		S 35						8
		L 25						6
	-06A	H 48	19.0±1.5	5.7	1.0	1.0	23.2	10
		S 28						6
		L 20						4
	-07A	H 30	11.8±2.0	8.6	1.5	1.8	18.4	7
		S 20						4
		L 15						2
	-08A	H 30	-2.3±3.0	4.7	1.0	1.9	5.4	6
		S 20						4
		L 15						2
	-09A	H 18	11.8±3.0	13.3	1.0	2.9	22.1	4
		S 12						2.5
		L 8						1.5

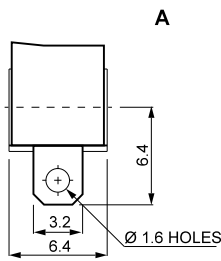
ORDERING INFORMATION

S	M		0	5		S		0	3		P			
SERIES PREFIX			RATING CURRENT			OPERATING FORCE		ACTUATOR TYPE			TERMINAL TYPE		CIRCUIT ARRANGEMENT	
		CODE												
		05	5A; 125VAC (5A;250VAC)		L	LIGHT		00		A			S.P.D.T.	
		10	10.1A; 125VAC (10.1A;250VAC)		S	STANDARD		01					1	S.P.S.T. NO
					H	HEAVY		02		B			2	S.P.S.T. NC
								03		C				
								04		D				
								05		E				
								06		P				
								07						
								08						
								09						
								10						
								11						

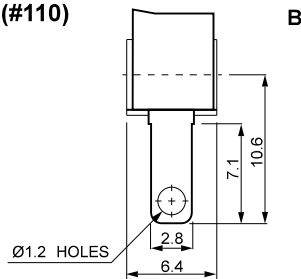
TYPE	CODE	L	S	H
SM	5A	O	O	O
	10.1A OR 5A 10E4			O

TERMINAL TYPES (The thickness of each terminal is 0.6)

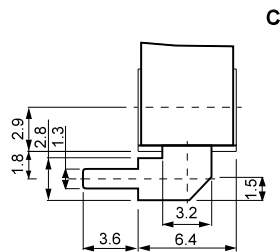
Solder terminal



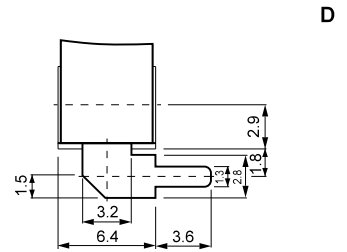
Quick connect terminal (#110)



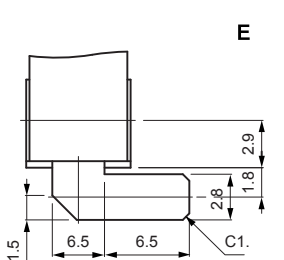
Side PCB terminal



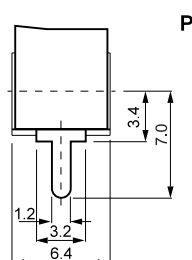
Side PCB terminal



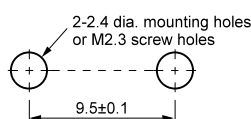
Side PCB terminal



PCB terminal



Mounting holes



Mounting holes for PCB terminal

