



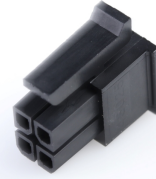
Part Number : [430250410](#)

Product Description : Micro-Fit 3.0 Receptacle Housing, Dual Row, 4 Circuits, UL 94V-2, Glow-Wire Capable, Black

Series Number : 43025

Status : Active

Product Category : Connector Housings



---

## Documents & Resources

### Drawings

[Drawing 430250410\\_sd.pdf](#)

### 3D Models and Design Files

[3D Model 430250410\\_stp.zip](#)

### Specifications

[Application Specification 430250000-AS-000.pdf](#)

[Packaging Specification PK-43025-001-001.pdf](#)

[Product Specification 430450001-PS-KO-000.pdf](#)

[Product Specification 430450001-PS-SP-000.pdf](#)

[Product Specification PS-43045-001.pdf](#)

[Test Summary 430450005-TS-000.pdf](#)

[Test Summary 430450006-TS-000.pdf](#)

[Test Summary TS-43045-001-001.pdf](#)


[Test Summary TS-43045-003-001.pdf](#)

[Test Summary TS-46235-001-001.pdf](#)

---

## Product Environment Compliance

### Compliance

|                    |   |
|--------------------|---|
| GADSL/IMDS         | Not Relevant  |
| China RoHS         |  |
| EU ELV             | Not Relevant  |
| Low-Halogen Status | Not Low-Halogen per IEC 61249-2-21  |
| REACH SVHC         | Not Contained per D(2023)3788-DC (14 Jun 2023)  |
| EU RoHS            | Compliant per EU 2015/863   |

## Multiple Part Product Compliance Statements

- Eu RoHS
- REACH SVHC
- Low-Halogen

## Multiple Part Industry Compliance Documents

- IPC 1752A Class C
- IPC 1752A Class D
- Molex Product Compliance Declaration
- IEC-62474
- chemSHERPA (xml)

## EU RoHS Certificate of Compliance

---

### Part Details

#### General

|             |  |
|-------------|--|
| Status      | Active   |
| Category    | Connector Housings   |
| Series      | 43025  |
| Description | Micro-Fit 3.0 Receptacle Housing, Dual Row, 4 Circuits, UL 94V-2, Glow-Wire Capable, Black   |
| Application | Power, Wire-to-Board, Wire-to-Wire   |
| Comments    | <p>This Molex product is manufactured from material that has the following ratings, tested by independent agencies: a) A Glow Wire Ignition Temperature (GWIT) of at least 775 deg C per IEC 60695-2-13. b) A Glow Wire Flammability Index (GWFI) above 850 deg C per IEC 60695-2-12 and hence complies with the requirements set out in the International Standard IEC 60335-1 5th edition - household and similar electrical appliances - safety, section 30 Resistance to heat and fire. The customers using this product must determine its suitability for use in their particular application through testing or other acceptable means as described in end-product glow-wire flammability test standard IEC 60695-2-11 and any applicable product end-use standard(s). If it is determined during the customer's evaluation of suitability, that higher performance is required, please contact Molex for possible product options.</p> |

|                |                            |
|----------------|----------------------------|
| Product Family | Micro-Fit Connector System |
| Product Name   | Micro-Fit 3.0              |
| UPC            | 889056719964               |

## Agency

|     |         |
|-----|---------|
| CSA | LR19980 |
| UL  | E29179  |

## Physical

|                               |                |
|-------------------------------|----------------|
| Circuits (maximum)            | 4              |
| Color - Resin                 | Black          |
| Flammability                  | 94V-2          |
| Gender                        | Receptacle     |
| Glow-Wire Capable             | Yes            |
| Keying to Mating Part         | None           |
| Lock to Mating Part           | Yes            |
| Material - Resin              | Nylon          |
| Net Weight                    | 0.451/g        |
| Number of Rows                | 2              |
| Packaging Type                | Bag            |
| Panel Mount                   | No             |
| Pitch - Mating Interface      | 3.00mm         |
| Polarized to Mating Part      | Yes            |
| Stackable                     | No             |
| Temperature Range - Operating | -40° to +125°C |

---

## Mates With / Use With

### Mates with Part(s)

| Description                          | Part Number  |
|--------------------------------------|--------------|
| Micro-Fit 3.0 Dual Row Plug Housings | <u>43020</u> |
| Micro-Fit 3.0 Dual Row Headers       | <u>43045</u> |
| Micro-Fit 3.0 Dual Row Test Plugs    | <u>44242</u> |

|   |               |
|---|---------------|
| Micro-Fit 3.0 Male-to-Micro-Fit 3.0 Male Off-the-Shelf (OTS) Cable Assemblies | <u>214757</u> |
| Micro-Fit 3.0 Male-to-Pigtail Off-the-Shelf (OTS) Cable Assemblies            | <u>214758</u> |

#### Use with Part(s)

| Description  | Part Number   |
|--|---|
| Pre-Crimped Lead Micro-Fit 3.0 Female-to-Micro-Fit 3.0 Female, Tin (Sn) Plating, 150.00mm Length, 20 AWG, Black  | <a href="/content/molex/molex-dot-com/us/en/products/product-page.html/797580002.html">/content/molex/molex-dot-com/us/en/products/product-page.html/797580002.html</a> |
| Pre-Crimped Lead Micro-Fit 3.0 Female-to-Micro-Fit 3.0 Female, Gold (Au) Plating, 150.00mm Length, 20 AWG, Black | <a href="/content/molex/molex-dot-com/us/en/products/product-page.html/797580004.html">/content/molex/molex-dot-com/us/en/products/product-page.html/797580004.html</a> |
| Pre-Crimped Lead Micro-Fit 3.0 Female-to-Micro-Fit 3.0 Female, Tin (Sn) Plating, 300.00mm Length, 20 AWG, Black  | <a href="/content/molex/molex-dot-com/us/en/products/product-page.html/797580010.html">/content/molex/molex-dot-com/us/en/products/product-page.html/797580010.html</a> |
| Pre-Crimped Lead Micro-Fit 3.0 Female-to-Micro-Fit 3.0 Female, Gold (Au) Plating, 300.00mm Length, 20 AWG, Black | <a href="/content/molex/molex-dot-com/us/en/products/product-page.html/797580012.html">/content/molex/molex-dot-com/us/en/products/product-page.html/797580012.html</a> |
| Micro-Fit 3.0 Female Crimp Terminals   | <u>43030</u>  |
| Micro-Fit 3.0 Female Crimp Terminals with Lubricant  | <u>45773</u>  |
| Micro-Fit Reduced Mating Force Female Crimp Terminals  | <u>46235</u>  |
| Pre-Crimped Lead Micro-Fit 3.0 Female-to-Micro-Fit 3.0 Female  | <u>214760</u>   |
| Pre-Crimped Lead Micro-Fit 3.0 Female-to-Pigtail   | <u>214761</u>   |