



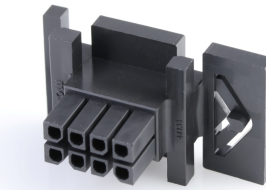
Part Number : [441330800](#)

Product Description : Micro-Fit BMI  
Receptacle Housing, Dual Row, Panel Mount,  
8 Circuits, Polyester, UL 94V-0

Series Number : 44133

Status : Active

Product Category : Connector Housings



---

## Documents & Resources

### Drawings

[Drawing 441330800\\_sd.pdf](#)

[Packaging Design Drawing PK-44133-002-001.pdf](#)

### 3D Models and Design Files

[3D Model 441330800\\_stp.zip](#)

### Specifications

[Application Specification 443000001-AS-000.pdf](#)

[Product Specification PS-44300-001-001.pdf](#)

[Test Summary TS-43045-001-001.pdf](#)

[Test Summary TS-43045-002-001.pdf](#)

[Test Summary TS-46235-001-001.pdf](#)

---

## Product Environment Compliance

### Compliance

GADSL/IMDS	Not Relevant
China RoHS	
EU ELV	Not Relevant
Low-Halogen Status	Not Low-Halogen per IEC 61249-2-21
REACH SVHC	Not Contained per D(2023)3788-DC (14 Jun 2023)
EU RoHS	Compliant per EU 2015/863

### [Multiple Part Product Compliance Statements](#)

- Eu RoHS
- REACH SVHC
- Low-Halogen

## Multiple Part Industry Compliance Documents

- IPC 1752A Class C
- IPC 1752A Class D
- Molex Product Compliance Declaration
- IEC-62474
- chemSHERPA (xml)

## EU RoHS Certificate of Compliance

---

### Part Details

#### General

Status	Active
Category	Connector Housings
Series	44133
Description	Micro-Fit BMI Receptacle Housing, Dual Row, Panel Mount, 8 Circuits, Polyester, UL 94V-0
Application	Power, Wire-to-Board, Wire-to-Wire
Product Family	Micro-Fit Connector System
Product Name	Micro-Fit BMI
UPC	800754807975

#### Agency

CSA	LR19980
UL	E29179

#### Physical

Circuits (maximum)	8
Color - Resin	Black
Flammability	94V-0
Gender	Receptacle
Glow-Wire Capable	No
Lock to Mating Part	No
Material - Resin	Polyester
Net Weight	2.136/g
Number of Rows	2
Packaging Type	Tray

Panel Mount	Yes
Pitch - Mating Interface	3.00mm
Polarized to Mating Part	Yes
Stackable	No
Temperature Range - Operating	-40° to +105°C

## Solder Process Data

Lead-Free Process Capability	N/A
------------------------------	-----

---

## Mates With / Use With

### Mates with Part(s)

Description	Part Number
Micro-Fit BMI Plug Housing, Dual Row, Panel Mount, 8 Circuits, Black	<u><a href="#">0443000800</a></u>
Micro-Fit BMI Right-Angle Dual Row Headers	<u><a href="#">44428</a></u>
Micro-Fit BMI Vertical Dual Row Headers	<u><a href="#">44432</a></u>
Micro-Fit BMI CPI Vertical Dual Row Headers	<u><a href="#">45280</a></u>

### Use with Part(s)

Description	Part Number
Pre-Crimped Lead Micro-Fit 3.0 Female-to-Micro-Fit 3.0 Female, Tin (Sn) Plating, 150.00mm Length, 20 AWG, Black	<u><a href="/content/molex/molex-dot-com/us/en/products/product-page.html/797580002.html">/content/molex/molex-dot-com/us/en/products/product-page.html/797580002.html</a></u>
Pre-Crimped Lead Micro-Fit 3.0 Female-to-Micro-Fit 3.0 Female, Gold (Au) Plating, 150.00mm Length, 20 AWG, Black	<u><a href="/content/molex/molex-dot-com/us/en/products/product-page.html/797580004.html">/content/molex/molex-dot-com/us/en/products/product-page.html/797580004.html</a></u>
Pre-Crimped Lead Micro-Fit 3.0 Female-to-Micro-Fit 3.0 Female, Tin (Sn) Plating, 300.00mm Length, 20 AWG, Black	<u><a href="/content/molex/molex-dot-com/us/en/products/product-page.html/797580010.html">/content/molex/molex-dot-com/us/en/products/product-page.html/797580010.html</a></u>
Pre-Crimped Lead Micro-Fit 3.0 Female-to-Micro-Fit 3.0 Female, Gold (Au) Plating, 300.00mm Length, 20 AWG, Black	<u><a href="/content/molex/molex-dot-com/us/en/products/product-page.html/797580012.html">/content/molex/molex-dot-com/us/en/products/product-page.html/797580012.html</a></u>
Micro-Fit 3.0 Female Crimp Terminals	<u><a href="#">43030</a></u>

Micro-Fit 3.0 Female Crimp Terminals with Lubricant	<u>45773</u>
Micro-Fit Reduced Mating Force Female Crimp Terminals	<u>46235</u>
Pre-Crimped Lead Micro-Fit 3.0 Female-to-Micro-Fit 3.0 Female	<u>214760</u>
Pre-Crimped Lead Micro-Fit 3.0 Female-to-Pigtail	<u>214761</u>

---

This document was generated on Sep 21, 2023