



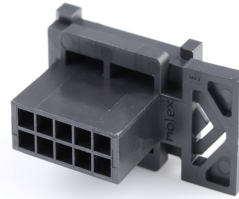
Part Number : [443001000](#)

Product Description : Micro-Fit BMI Plug Housing, Dual Row, Panel Mount, 10 Circuits, Black

Series Number : 44300

Status : Active

Product Category : Connector Housings



Documents & Resources

Drawings

[Drawing 443001000_sd.pdf](#)

3D Models and Design Files

[3D Model 443001000_stp.zip](#)

Specifications

[Application Specification 443000001-AS-000.pdf](#)

[Packaging Specification PK-44300-001-001.pdf](#)

[Product Specification PS-44300-001-001.pdf](#)

[Test Summary TS-43045-001-001.pdf](#)


[Test Summary TS-43045-002-001.pdf](#)

[Test Summary TS-44300-001-001.pdf](#)

[Test Summary TS-46235-001-001.pdf](#)

Product Environment Compliance

Compliance

GADSL/IMDS	Not Relevant
China RoHS	
EU ELV	Not Relevant
Low-Halogen Status	Not Low-Halogen per IEC 61249-2-21
REACH SVHC	Not Contained per D(2023)3788-DC (14 Jun 2023)
EU RoHS	Compliant per EU 2015/863

[Multiple Part Product Compliance Statements](#)

- Eu RoHS

- REACH SVHC

- Low-Halogen

Multiple Part Industry Compliance Documents

- IPC 1752A Class C
- IPC 1752A Class D
- Molex Product Compliance Declaration
- IEC-62474
- chemSHERPA (xml)

EU RoHS Certificate of Compliance

Part Details

General

Status	Active
Category	Connector Housings
Series	44300
Description	Micro-Fit BMI Plug Housing, Dual Row, Panel Mount, 10 Circuits, Black
Application	Power, Wire-to-Board, Wire-to-Wire
Product Family	Micro-Fit Connector System
Product Name	Micro-Fit BMI
UPC	800753281929

Agency

CSA	LR19980
UL	E29179

Physical

Circuits (maximum)	10
Color - Resin	Black
Flammability	94V-0
Gender	Plug
Glow-Wire Capable	No
Lock to Mating Part	No
Material - Resin	Polyester
Net Weight	3.016/g
Number of Rows	2

Packaging Type	Bag
Panel Mount	Yes
Pitch - Mating Interface	3.00mm
Polarized to Mating Part	Yes
Stackable	No
Temperature Range - Operating	-40° to +105°C

Solder Process Data

Lead-Free Process Capability	N/A
------------------------------	-----

Mates With / Use With

Mates with Part(s)

Description	Part Number
Micro-Fit BMI Dual Row Receptacle Housings	<u>44133</u>
Micro-Fit BMI Right-Angle Dual Row PCB Receptacles	<u>44764</u>
Micro-Fit BMI Vertical Dual Row PCB Receptacles	<u>44769</u>

Use with Part(s)

Description	Part Number
Micro-Fit Male Crimp Terminals	<u>43031</u>
Pre-Crimped Lead Micro-Fit 3.0 Male-to-Micro-Fit 3.0 Male	<u>214762</u>
Pre-Crimped Lead Micro-Fit 3.0 Male-to-Pigtail	<u>214763</u>