



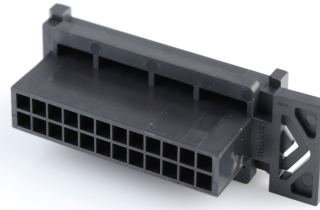
**Part Number :** [443002400](#)

**Product Description :** Micro-Fit BMI Plug Housing, Dual Row, Panel Mount, 24 Circuits, Black

**Series Number :** 44300

**Status :** Active

**Product Category :** Connector Housings



---

## Documents & Resources

### Drawings

[Drawing 443002400\\_sd.pdf](#)

[Packaging Design Drawing PK-44300-002-001.pdf](#)

### 3D Models and Design Files

[3D Model 443002400\\_stp.zip](#)

### Specifications

[Application Specification 443000001-AS-000.pdf](#)

[Product Specification PS-44300-001-001.pdf](#)

[Test Summary TS-43045-001-001.pdf](#)


[Test Summary TS-43045-002-001.pdf](#)

[Test Summary TS-46235-001-001.pdf](#)

---

## Product Environment Compliance

### Compliance

GADSL/IMDS	Not Relevant
China RoHS	
EU ELV	Not Relevant
Low-Halogen Status	Not Low-Halogen per IEC 61249-2-21
REACH SVHC	Not Contained per D(2023)3788-DC (14 Jun 2023)
EU RoHS	Compliant per EU 2015/863

### Multiple Part Product Compliance Statements

- Eu RoHS
- REACH SVHC
- Low-Halogen

## Multiple Part Industry Compliance Documents

- IPC 1752A Class C
- IPC 1752A Class D
- Molex Product Compliance Declaration
- IEC-62474
- chemSHERPA (xml)

## EU RoHS Certificate of Compliance

---

### Part Details

#### General

Status	Active
Category	Connector Housings
Series	44300
Description	Micro-Fit BMI Plug Housing, Dual Row, Panel Mount, 24 Circuits, Black
Application	Power, Wire-to-Board, Wire-to-Wire
Product Family	Micro-Fit Connector System
Product Name	Micro-Fit BMI
UPC	800753281981

#### Agency

CSA	LR19980
UL	E29179

#### Physical

Circuits (maximum)	24
Color - Resin	Black
Flammability	94V-0
Gender	Plug
Glow-Wire Capable	No
Lock to Mating Part	No
Material - Resin	Polyester
Net Weight	5.207/g
Number of Rows	2
Packaging Type	Bag

Panel Mount	Yes
Pitch - Mating Interface	3.00mm
Polarized to Mating Part	Yes
Stackable	No
Temperature Range - Operating	-40° to +105°C

## Solder Process Data

Lead-Free Process Capability	N/A
------------------------------	-----

---

## Mates With / Use With

### Mates with Part(s)

Description	Part Number
Micro-Fit BMI Dual Row Receptacle Housings	<u>44133</u>
Micro-Fit BMI Right-Angle Dual Row PCB Receptacles	<u>44764</u>
Micro-Fit BMI Vertical Dual Row PCB Receptacles	<u>44769</u>

### Use with Part(s)

Description	Part Number
Micro-Fit Male Crimp Terminals	<u>43031</u>
Pre-Crimped Lead Micro-Fit 3.0 Male-to-Micro-Fit 3.0 Male	<u>214762</u>
Pre-Crimped Lead Micro-Fit 3.0 Male-to-Pigtail	<u>214763</u>