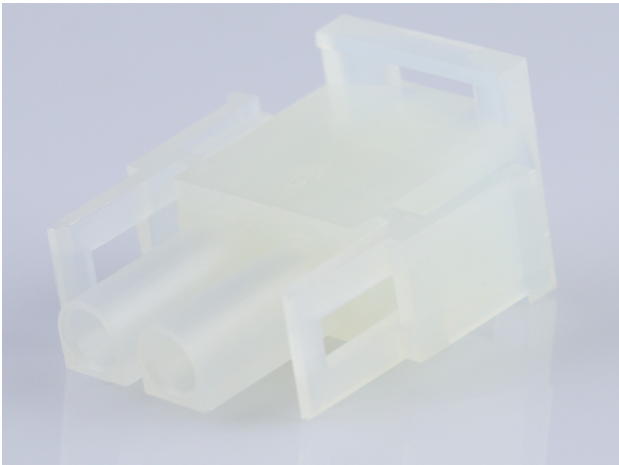




**Part Number :** [50841025](#)  
**Product Description :** 2.13mm Diameter MLX  
Power Crimp Housing Plug, 2 Circuits, Natural  
**Series Number :** 42021  
**Status :** Active  
**Product Category :** Connector Housings  
**Engineering Number :** 42021-2C



Documents & Resources

Drawings

[Drawing 050841025\\_sd.pdf](#)  
[Packaging Design Drawing PK-42021-XX-001.pdf](#)

3D Models and Design Files


[3D Model 050841025\\_stp.zip](#)

Specifications

[Product Specification PS-42022-0001-001.pdf](#)  
[Test Summary TS-42022-0001-001.pdf](#)

Product Environment Compliance

Compliance

GADSL/IMDS	Not Relevant
China RoHS	
EU ELV	Not Relevant
Low-Halogen Status	Low-Halogen per IEC 61249-2-21
REACH SVHC	Contains melamine per D(2023)3788-DC (14 Jun 2023)
EU RoHS	Compliant per EU 2015/863

[Multiple Part Product Compliance Statements](#)

- Eu RoHS
- REACH SVHC

- Low-Halogen

#### Multiple Part Industry Compliance Documents

- IPC 1752A Class C
- IPC 1752A Class D
- Molex Product Compliance Declaration
- IEC-62474
- chemSHERPA (xml)

#### EU RoHS Certificate of Compliance

---

## Part Details

### General

Status	Active
Category	Connector Housings
Series	42021
Description	2.13mm Diameter MLX Power Crimp Housing Plug, 2 Circuits, Natural
Application	Power, Wire-to-Board, Wire-to-Wire
Comments	Glow Wire Equivalent Part Number 366430002; Maximum current per contact 20A if used with 36663 and 36664 terminal
Product Family	MLX Power Connectors
Product Name	MLX
UPC	800754385411

### Agency

CSA	LR19980
UL	E29179

### Electrical

Current - Maximum per Contact	13.5A, 20.0A
-------------------------------	--------------

### Physical

Circuits Detail	2
Circuits (maximum)	2
Color - Resin	Natural

Flammability	94V-0
Gender	Plug
Glow-Wire Capable	No
Keying to Mating Part	None
Lock to Mating Part	Yes
Material - Resin	Nylon
Net Weight	2.038/g
Number of Rows	1
Packaging Type	Bag
Panel Mount	No
Pitch - Mating Interface	6.35mm
Polarized to Mating Part	Yes
Stackable	No
Temperature Range - Operating	-55° to +105°C

#### Solder Process Data

Lead-Free Process Capability	N/A
------------------------------	-----

---

#### Mates With / Use With

##### Mates with Part(s)

Description	Part Number
6.35mm Pitch MLX Vertical Power Connector Headers	<u><a href="#">42002</a></u>
2.13mm Diameter MLX Pin and Socket Receptacles	<u><a href="#">42022</a></u>
MLX Vertical Power Connector Headers	<u><a href="#">43255</a></u>

##### Use with Part(s)

Description	Part Number
Pre-Crimped Lead MLX Male-to-MLX Male, Tin (Sn) Plating, 150.00mm Length, 18 AWG, Black	<u><a href="/content/molex/molex-dot-com/us/en/products/product-page.html/797582029.html">/content/molex/molex-dot-com/us/en/products/product-page.html/797582029.html</a></u>
Pre-Crimped Lead MLX Male-to-MLX Male, Tin (Sn) Plating, 300.00mm Length, 18 AWG, Black	<u><a href="/content/molex/molex-dot-com/us/en/products/product-page.html/797582030.html">/content/molex/molex-dot-com/us/en/products/product-page.html/797582030.html</a></u>

Pre-Crimped Lead MLX Female-to-MLX Female, Tin (Sn) Plating, 150.00mm Length, 18 AWG, Black	<a href="/content/molex/molex-dot-com/us/en/products/product-page.html/797582031.html">/content/molex/molex-dot-com/us/en/products/product-page.html/797582031.html</a>
Pre-Crimped Lead MLX Female-to-MLX Female, Tin (Sn) Plating, 300.00mm Length, 18 AWG, Black	<a href="/content/molex/molex-dot-com/us/en/products/product-page.html/797582032.html">/content/molex/molex-dot-com/us/en/products/product-page.html/797582032.html</a>
MLX Crimp Terminals	<a href="#">36663</a>
MLX Female Terminals	<a href="#">36664</a>
MLX Male Crimp Terminals	<a href="#">42023</a>
MLX Female Crimp Terminals	<a href="#">42024</a>

---

This document was generated on Oct 20, 2023