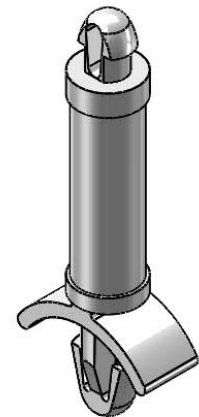


MATERIAL: NYLON 6/6 UL 94 V-2 (RMS-01) COLOR: NATURAL PART NO.	DIM. "A"±.015 [0.4]
DLCBSAT-2-01	1/8 [3.2]
DLCBSAT-3-01	3/16 [4.8]
DLCBSAT-4-01	1/4 [6.4]
DLCBSAT-5-01	5/16 [7.9]
DLCBSAT-6-01	3/8 [9.5]
DLCBSAT-7-01	7/16 [11.1]
DLCBSAT-8-01	1/2 [12.7]
DLCBSAT-9-01	9/16 [14.3]
DLCBSAT-10-01	5/8 [15.9]



NOTES:

1. MATERIAL: NYLON 6/6 UL 94 V-0 (RMS-19), AVAILABLE BY SPECIAL ORDER ONLY.
2. COLOR: NATURAL.
3. ALTERNATE UNITS FOR REFERENCE ONLY.

F SEE CO 200628 FOR CHANGES SK 02/17/11			TITLE: DUAL LOCKING CBS, ARROWHEAD/TEARDROP			DWG IN IN [MM]		FINAL	
E REDRAWN, SEE ECN #1208 FOR CHANGES SK 11/29/06			FILE #: DLCBSAT			DWN: SK		APP: RT	
- SEE ENGINEERING FOR REVISIONS A-D			SHEET: 1 OF 1 SHEET SIZE: A			DT: 11/27/06		CHKD: SJ	
REV. DESCRIPTION ENGR. DATE			RE: RICHCO, INC.			RICHCO, INC. ENG@RICHCO-INC.COM (773) 539-4060		PART # SEE TABLE	
			TOLERANCES UNLESS NOTED .XX=±.010 .XXX=±.005 FRAC.=±1/64 ANG.=±1°					PRINT TYPE CA	