

PLEASE CHECK WWW.MOLEX.COM FOR LATEST PART INFORMATION

Part Number: [11-03-0036](#)
Status: **Active**
Description: Extraction Tool

Documents:

[RoHS Certificate of Compliance \(PDF\)](#)

General

Product Family	Application Tooling
Series	T0201
Function	Extraction
Geographic Area	Global
Level of Automation	Manual
More Detailed Tech Information	applicationtooling@molex.com
Product Name	N/A
Survey	www.molex.com//review/apptool_survey.html
Tool Type	Handtool
UPC	800753609525

Physical

Net Weight	12.320/g
------------	----------

Material Info

Old Part Number	HT71800
-----------------	---------

Reference - Drawing Numbers

Application Tooling Documents	HT71800, TM-638000029, TM-638000029CN, TM-638000029DE, TM-638000029FR, TM-638000029IT, TM-638000029JP, TM-638000029KR, TM-638000029MY, TM-638000029PL, TM-638000029RU, TM-638000029SK, TM-638000029SP, TM-638000029TH, TM-638000029TW, TM-638000029VN
-------------------------------	---

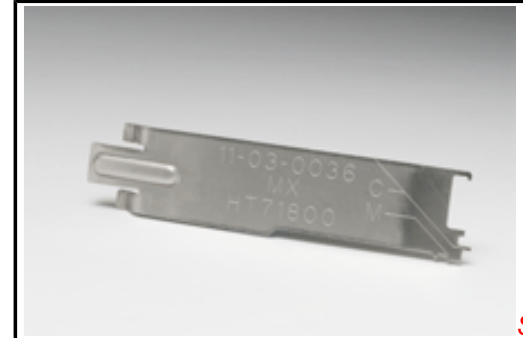


image - Reference only

Series

EU RoHS

China RoHS

Compliance Status

Not Reviewed

REACH SVHC

Not Reviewed

Low-Halogen Status

Not Reviewed

Need more information on product environmental compliance?

Email productcompliance@molex.com
 For a multiple part number RoHS Certificate of Compliance, [click here](#)

Please visit the [Contact Us](#) section for any non-product compliance questions.

Search Parts in this Series

T0201Series

Application Tooling | FAQ
Description | Product #

SL™ Crimp Terminal, Series 70021, Male, with Tin (Sn) Plated Contact, 24-30 AWG, Bag	0016020108
SL™ Crimp Terminal, Series 70021, Male, with 0.76µm Selective Gold (Au) Plated Contact, 22-24 AWG, Reel	0016020116
SL™ Crimp Terminal, Series 70021, Male, with 0.38µm Selective Gold (Au) Plated Contact, 24-30 AWG, Reel	0016020077
SL™ Crimp Terminal, Series	0016020078

70021, Male, with
0.76µm Selective
Gold (Au) Plated
Contact, 24-30 AWG,
Reel
SL™ Crimp 0016020081
Terminal, Series
70021, Male, with
0.38µm Selective
Gold (Au) Plated
Contact, 22-24 AWG,
Reel
SL™ Crimp Terminal 0016020083
70058, 24-30 AWG,
Reel Selective Gold
(Au)
SL™ Crimp 0016020086
Terminal, Series
70058, Female,
with Tin (Sn) Plated
Contact, 22-24 AWG,
Reel
SL™ Crimp Terminal 0016020088
70058, 22-24 AWG,
Reel Selective Gold
(Au)
SL™ Crimp 0016020096
Terminal, Series
70058, Female,
with Tin (Sn) Plated
Contact, 24-30 AWG,
Bag
SL™ Crimp Terminal 0016020097
70058, 24-30 AWG,
Bag Selective Gold
(Au)
SL™ Crimp Terminal 0016020098
70058, 24-30 AWG,
Bag Selective Gold
(Au)
SL™ Crimp 0016020102
Terminal, Series
70058, Female,
with Tin (Sn) Plated
Contact, 22-24 AWG,
Bag
SL™ Crimp Terminal 0016020103
70058, 22-24 AWG,
Bag Selective Gold
(Au)
SL™ Crimp Terminal 0016020104
70058, 22-24 AWG,
Bag Selective Gold
(Au)
SL™ Crimp 0016020105
Terminal, Series
70021, Male, with Tin
(Sn) Plated Contact,
24-30 AWG, Reel
SL™ Crimp 0016020107
Terminal, Series
70021, Male, with Tin
(Sn) Plated Contact,
22-24 AWG, Reel

SL™ Crimp Terminal, Series 70021, Male, with 0.38µm Selective Gold (Au) Plated Contact, 24-30 AWG, Bag	0016020109
SL™ Crimp Terminal, Series 70021, Male, with 0.76µm Selective Gold (Au) Plated Contact, 24-30 AWG, Bag	0016020110
SL™ Crimp Terminal, Series 70021, Male, with Tin (Sn) Plated Contact, 22-24 AWG, Bag	0016020114
SL™ Crimp Terminal, Series 70021, Male, with 0.38µm Selective Gold (Au) Plated Contact, 22-24 AWG, Bag	0016020115
SL™ Crimp Terminal, Series 70021, Male, with 0.76µm Selective Gold (Au) Plated Contact, 22-24 AWG, Bag	0016020117
SL™ Crimp Terminal 70058, 22-24 AWG, Reel Selective Gold (Au)	0016020087
SL™ Crimp Terminal, Series 70058, Female, with Tin (Sn) Plated Contact, 24-30 AWG, Reel	0016020069
SL™ Crimp Terminal 70058, 24-30 AWG, Reel Selective Gold (Au)	0016020082

This document was generated on 10/05/2012

PLEASE CHECK WWW.MOLEX.COM FOR LATEST PART INFORMATION