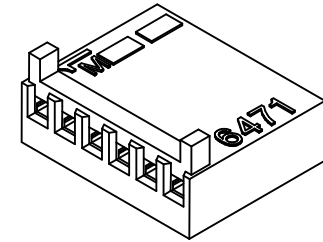
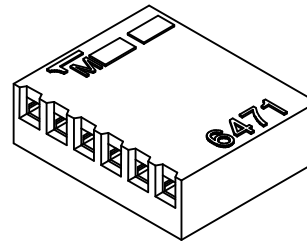
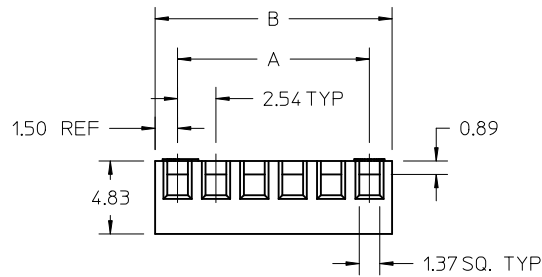
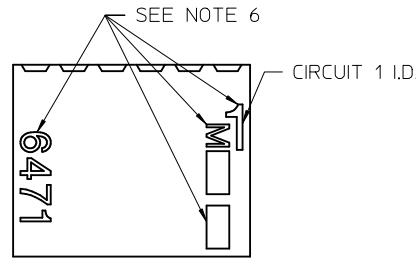
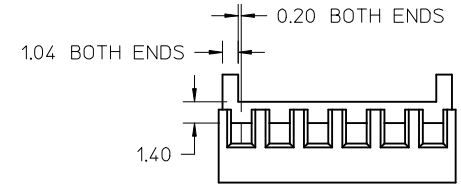
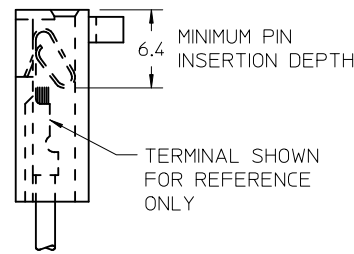
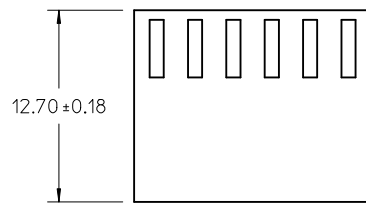


	13		12		11		10		9		8		7		6		5		4		3		2		1
J	22	53.34±0.35	56.34±0.35																						
	21	50.80±0.35	53.80±0.35																						
	20	48.26±0.35	51.26±0.35																						
	19	45.72±0.35	48.72±0.35																						
	18	43.18±0.35	46.18±0.35																						
I	17	40.64±0.35	43.64±0.35																						
	16	38.10±0.35	41.10±0.35																						
	15	35.56±0.35	38.56±0.35																						
	14	33.02±0.35	36.02±0.35																						
	13	30.48±0.35	33.48±0.35																						
H	12	27.94±0.35	30.94±0.35																						
	11	25.40±0.35	28.40±0.35																						
	10	22.86±0.35	25.86±0.35																						
	9	20.32±0.35	23.32±0.35																						
G	8	17.78±0.35	20.78±0.35																						
	7	15.24±0.35	18.24±0.35																						
	6	12.70±0.15	15.70±0.15																						
	5	10.16±0.15	13.16±0.15																						
	4	7.62±0.15	10.62±0.15																						
F	3	5.08±0.15	8.08±0.15																						
	2	2.54±0.15	5.54±0.15																						
	No. OF CCTS	DIM A	DIM B																						



SHOWN WITH OPTIONAL RAMP AND POLARIZATION RIBS



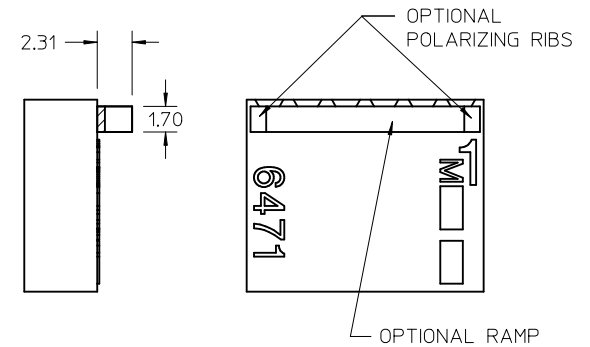
LEGEND

E-6471-*N*

MATERIAL
BLANK= NATURAL

OF CIRCUITS

OPTION CODE
BLANK=NO RAMP OR POLARIZATION RIB
|= RAMP AND POLARIZATION RIB



OPTIONAL RAMP AND POLARIZING RIBS

NOTES:

1. MATERIAL:
"BLANK": POLYAMIDE (PA66/6), UL94V-0, COLOR: NATURAL (WHITE)
2. FINISH: N/A
3. PRODUCT SPECIFICATION: PS-99020-0088
4. PACKAGING: BULK
5. FOR USE WITH TERMINAL SERIES 2759, 41572, 4809, 6459, AND 8088.
6. TEXT MAY BE PRESENT ON EITHER SIDE OF PART.
7. THIS PART CONFORMS TO CLASS B REQUIREMENTS OF COSMETIC SPECIFICATION PS-45499-002.

RE G	REV	DESCRIPTION	QUALITY SYMBOLS	GENERAL TOLERANCES (UNLESS SPECIFIED)		DIMENSION STYLE		SCALE	DESIGN UNITS	THIRD ANGLE PROJECTION		
				mm	INCH	MM ONLY	METRIC	4:1				
G	REV	DESCRIPTION	QUALITY SYMBOLS	4 PLACES	± ---	± ---	DRAWN BY	DATE	TITLE KK 2.54MM CRIMP TERMINAL HOUSING			
				3 PLACES	± ---	± ---	SF	2000/07/14				
				2 PLACES	± 0.15	± ---	CHECKED BY	DATE	MATERIAL NO. SD-6471-N*-**			
1 PLACE	± 0.25	± ---	DWASZKIEWICZ	2006/02/27	SHEET NO. 1 OF 2							
				ANGULAR	± ---°	± ---	APPROVED BY	DATE	MOLEX INCORPORATED			
							FSMITH	2011/10/11				DOCUMENT NO.
				DRAFT WHERE APPLICABLE MUST REMAIN WITHIN DIMENSIONS			SEE CHART					
							SIZE			THIS DRAWING CONTAINS INFORMATION THAT IS PROPRIETARY TO MOLEX INCORPORATED AND SHOULD NOT BE USED WITHOUT WRITTEN PERMISSION		

E-6471-N		
PART No.	ENG No.	No. OF CIRCUITS
22-01-2026	E-6471-2	2
↑ -2036	↑ -3	3
-2046	-4	4
-2056	-5	5
-2066	-6	6
-2076	-7	7
-2086	-8	8
-2096	-9	9
-2106	-10	10
-2116	-11	11
-2126	-12	12
-2136	-13	13
-2146	-14	14
-2156	-15	15
-2166	-16	16
-2176	-17	17
-2186	-18	18
-2196	-19	19
-2206	-20	20
↓ -2216	↓ -21	21
22-01-2226	E-6471-22	22

E-6471-NI		
PART No.	ENG No.	No. OF CIRCUITS
22-01-2025	E-6471-02I	2
↑ -2035	↑ -03I	3
-2045	-04I	4
-2055	-05I	5
-2065	-06I	6
-2075	-07I	7
-2085	-08I	8
-2095	-09I	9
-2105	-10I	10
-2115	-11I	11
-2125	-12I	12
-2135	-13I	13
-2145	-14I	14
-2155	-15I	15
-2165	-16I	16
-2175	-17I	17
-2185	-18I	18
-2195	-19I	19
-2205	-20I	20
↓ -2215	↓ -21I	21
22-01-2225	E-6471-22I	22

SEE SHEET 1 EC NO: UCP2011-0386 DRWN:MKIPPER 2011/05/27 CHKD:ANDERSON 2011/05/27 APPR:FSMITH 2011/10/11	QUALITY SYMBOLS 	GENERAL TOLERANCES (UNLESS SPECIFIED) <table border="1"> <tr><th></th><th>mm</th><th>INCH</th></tr> <tr><td>4 PLACES</td><td>± .005</td><td>± .0005</td></tr> <tr><td>3 PLACES</td><td>± .005</td><td>± .0005</td></tr> <tr><td>2 PLACES</td><td>± 0.15</td><td>± .005</td></tr> <tr><td>1 PLACE</td><td>± 0.25</td><td>± .010</td></tr> </table>		mm	INCH	4 PLACES	± .005	± .0005	3 PLACES	± .005	± .0005	2 PLACES	± 0.15	± .005	1 PLACE	± 0.25	± .010	DIMENSION STYLE MM ONLY DRAWN BY DATE SF 2000/07/14 CHECKED BY DATE DWASZKIEWICZ 2006/02/27 APPROVED BY DATE FSMITH 2011/10/11	SCALE 1:1 DESIGN UNITS METRIC 	TITLE KK 2.54MM CRIMP TERMINAL HOUSING
		mm	INCH																	
	4 PLACES	± .005	± .0005																	
	3 PLACES	± .005	± .0005																	
2 PLACES	± 0.15	± .005																		
1 PLACE	± 0.25	± .010																		
MATERIAL NO. SEE CHART	DOCUMENT NO. SD-6471-N*-***	SHEET NO. 2 OF 2																		
DRAFT WHERE APPLICABLE MUST REMAIN WITHIN DIMENSIONS			THIS DRAWING CONTAINS INFORMATION THAT IS PROPRIETARY TO MOLEX INCORPORATED AND SHOULD NOT BE USED WITHOUT WRITTEN PERMISSION																	
			SIZE C																	