

## Barrier Screw Terminal Strips for Panel / Chassis Mounting

307-PCF | 11.00 mm (0.433 in) Spacing - 2-21 poles

### PICTURES



307-PCF

### TECHNICAL INFORMATION

#### Description

Double row screw connector

Recommended mounting hardware: M4 pan head screw (#8-32 pan head screw) or similar sized sheet metal screw, self-tapping screw or rivet.

#### Technical Data

**Center to Center Spacing:** 11.000 mm (0.433 in)

**Nominal Cross Section:** 4 mm<sup>2</sup> (6200 mils<sup>2</sup>)

**Wire Stripping Length:** 8.500 mm (0.335 in)

#### Bill of Materials

**Molding :** Polycarbonate, Self extinguishing UL 94, V-0

**Color :** Grey

**Temperature limits :**

**Short Time :** 135°C (275°F)

**Continuous :** 105°C (221°F)

**Low Limit :** -100°C (-148°F)

**Comparative Tracking Index :** CTI ? 600 V

**Oxygen Index Rating :** 34 %

**Terminal Body:** Nickel plated copper alloy



**Rivet:** Tin plated copper alloy

**Screw and Pressure Plate:** Slotted head, zinc plated blue passivated, steel substrate M4

**Spring Washer and Plain Washer:** (-PCF only): yellow chromate passivated, zinc plated, steel

APPROVAL INFORMATION

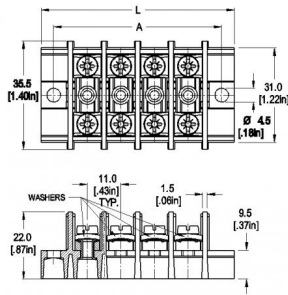
UL File No. E69841 | CSA File No. LR24322

Type	Current (A)	Voltage (V)	Application Group	AWG	Screw Tightening Torque
 307-PCF 11.0 mm	20	600	B, C	14 max.	10.6 lbfin
 307-PCF 11.0 mm	20	600	B, C, D, E	18-14	1.2 lbfin

International Approval Information



## TECHNICAL DRAWING



### Description :

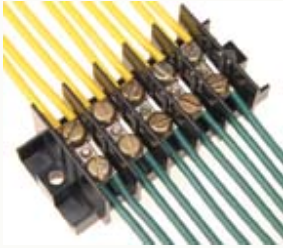
Length of Connector (L)

$L = \text{No. of Poles} \times \text{Center to Center Spacing} + 19.3 \text{ mm}$

Distance between mounting holes (A)

$A = \text{No. of Poles} \times \text{Center to Center Spacing} + 11.0 \text{ mm}$

## SECTION C - SERIES 307-PC



### Terminal Strips for Panel / Chassis Mounting

Series 307-PC is WECO's equivalent to twin-row panel-mounted North American style barrier strips. They are molded of UL 94 V-0 self-extinguishing polycarbonate and available in 2 to 21 poles. The strips are fixed to the mounting surface using the molded mounting holes at each end of the strip.

Two versions are offered the 307-PCA which is supplied with two metric screws in each pole position and the 307-PCF, supplied with both a plain and a spring washer along with the clamping screw.

Each product has a "How To Order" area as well as a complete listing of UL and CSA approval specifications, available options and accessories.