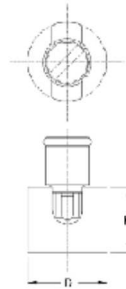


## EURO-STYLE TERMINAL BLOCKS

**316**

Variable Spacing - 1 poles

[Print this page](#)



[Distributor stock check](#)

[view 3d model](#)

### TECHNICAL INFORMATION

### HOW TO ORDER

#### Description

The terminals can be fastened in by hand. It is possible to connect uncut conductors. The slotted bolt is cemented and torsion-resistant. The insulated cap nut has a round stationary clamping member.

Ceramic Terminal Block

Cylindrical

#### Technical Data

(maximum load at 40°C (104°F) ambient temperature)

**Nominal Cross Section:** 6.000 mm<sup>2</sup>

**Wire Stripping Length:** 10 mm

**Recommended Voltage Range:** 250 V

**Recommended operating Current:** 44 A

**Wire Range:** 2 x 10 AWG

#### Bill of Materials

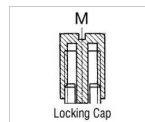
**Molding :** Glazed porcelain KER 111, DIN 40685

**Color :** White

**Upper Temperature Limit 1 :** 80°C (176°F) :

#### Visual Description

##### Locking Cap M



##### RoHS WEEE Pb free surface compliant



**Please fill in the How to Order box**

- Request Sample                      Quantity
- Request Quote                      Quantity

**316**

**OPTIONS:**

-- No option for this product --

**Notes**

Outside diameter: 21 mm. Locking cap MU and DF can be available,  
please consult factory

ADD TO CART