

FEATURES AND SPECIFICATIONS

Features and Benefits

- Sizes 3 and 4 circuits
- JIS D0203 S2 waterproof compliant
- Unique seal stopper design provides low insertion force
- For tight packaging applications
- User-friendly friction lock saves space and protects locking latch area
- One-body wire and seal enables tighter spacing between terminals

Reference Information

Packaging: Tray

Mates With: 52213

Use With: 50147

Designed In: Millimeters

Electrical

Voltage: 25V

Current: 4.0A

Contact Resistance: 10mΩ max.

Dielectric Withstanding Voltage: 500V AC/1 min.

Insulation Resistance: 250 MΩ min.

Physical

Housing/Cap: Glass-filled PBTP

Wire End Seal: Silicone

Seal Stopper: Glass-filled PBTP

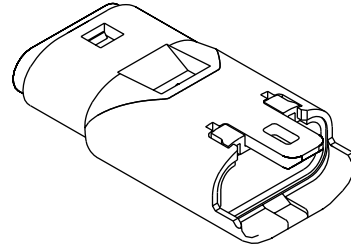
Seal: Silicone

Operating Temperature: -40 to +105°C

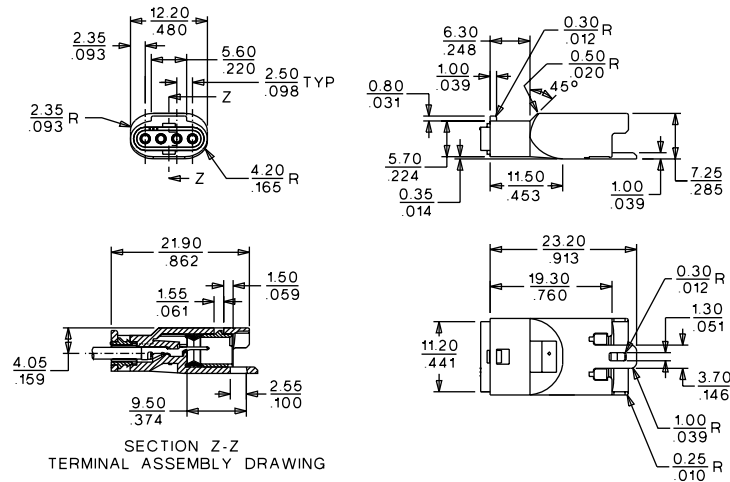
molex® 2.50mm (.098") Pitch Splash Proof Wire-to-Wire Plug

52266

3 and 4-Circuit Version



CATALOG DRAWING (FOR REFERENCE ONLY)



ORDERING INFORMATION

Circuits	Order No.	Housing/Cap Color
3	52266-0311	Black
4	52266-0417	Brown