

- ① F Housing
- ② O-Ring\*2
- ③ O-Ring
- ④ Nut
- ⑤ Ins\_Housing

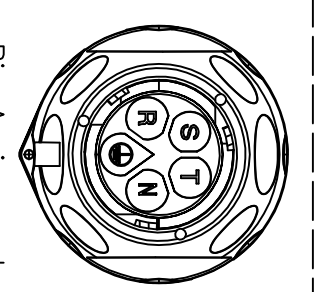
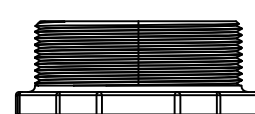
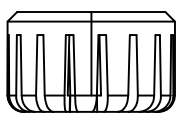
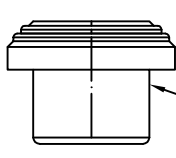
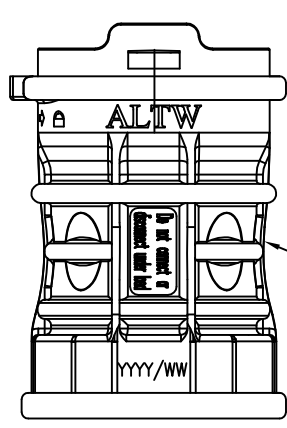
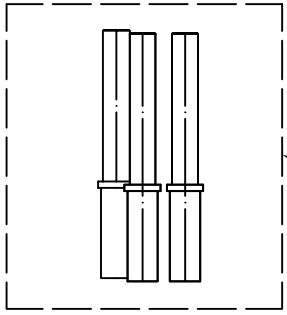
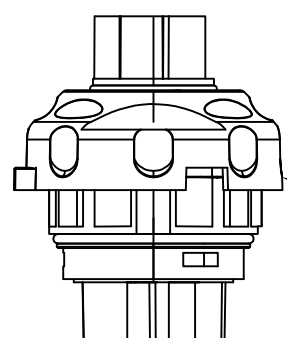
- ⑥ F\_Pin
- ⑦ Built-In Spring
- ⑧ PE Bag (HPE00910085)

⑨ Body

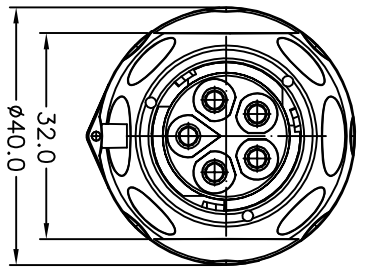
⑩ Seal(16MM)

⑪ Clamp Ring (16MM)

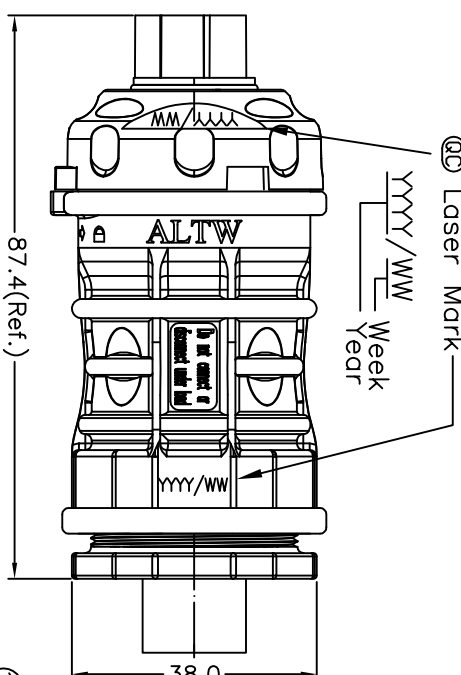
⑫ Clamp Nut (16MM)



Pin Assignments  
Front View



Conn.



⑯ Laser Mark  
YYYY / WW  
Year

Note:

- \* ⑯ Important Dimensions To Check (重點檢查尺寸)
- \* Voltage (電壓) : AC 660V ; DC 1000V
- \* Current (電流) : 25A
- \* Please refer to manual for Ass'y instruction (使用方式請參閱組裝說明書)
- \* Standard (認證) : ULXXXXX ; CSAXXXXX; TUVXXXXXX
- \* Waterproof Rate(防水等級) : IP68\_3M6H(Mating對接)
- \* Female Housing(母膠芯) : m-PPE(F1),Black (黑)
- \* Female Pin(母端子) : Copper(銅),Tin Plated(鍍錫)
- \* O-ring (O型環) : Silicone (矽樹脂),Gray (灰)
- \* Cable OD range (線材範圍) : 16mm~13mm
- \* Wire Size(導體尺寸): 12AWG
- \* Flame Class(防火等級): UL94V-0
- \* One Set Unassembled in one PE Bag.
- \* One Set Ass'y Instructions & Tool in one PE Bag. (每包袋子中含有未組裝零件, 組裝說明書及工具)

UNIT:mm



TOLERANCE  
.X ±0.25  
XX ±0.1  
XXX ±0.05  
ANGLES ±1°

TITLE  
PV Connector 5Pin Cable(16MM)

SCALE  
FREE SIZE A4

SHEET 1 OF 1

REV. A @ : Inspection Item

Amphenol LTW

安費諾亮泰企業股份有限公司

ITEM NO  
PW-H-05BFFC-LL8001

DRAWN BY  
Micky

DATE  
2011/06/13

1 2 3 4 5 6 7 8