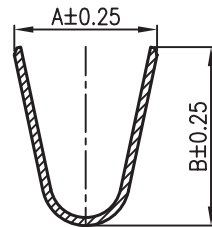
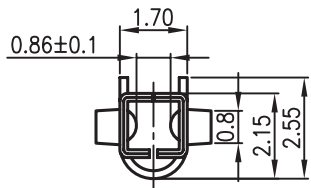
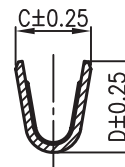


Specifications:

Current Rating:9.0 AC/DC
 Voltage Rating:600V AC/DC
 Contact Resistance:10m ohm. max.
 Withstanding Voltage:1,500V AC/minute
 Operating Temperature Range:-40°C~+105°C
 Application Wires:AWG16 to 28
 Mates With 2257 Series Housing
 Material and Finish
 Contact:Brass or Phosphor Bronze
 Finish:Tin Plated
 Packing:See Table



A-A



B-B

Part No	Wire Apply	A	B	C	D	Q'ty/Reel
	16AWG	3.6	4.5	2.3	2.7	4,000Pcs
MFF 02-01F	18-24AWG	3.6	4.5	1.9	2.3	4,000Pcs
	22-28AWG	2.3	2.3	1.8	1.65	5,000Pcs

RoHS Compliant

REV.	DATE	FILE	BY
F			
E			
D			
C	01-DEC-2010	Amend Stru.	Art
B	24-NOV-2009	Amend dim.	Art
A	09-DEC-2008	(PC0001)	Art

DRAWN:	Art
CHECKED:	
APPROVAL:	Mike Wu
PROJECTION:	

GENERAL TOLERANCE:	.X=±0.2 .XX=±0.15
UNIT:	MM
SCALE:	1:1
SHEET:	1/1
DESCRIPTION:	4.2mm Plug Crimp Terminal
PART NO:	

SIZE	A4
------	-----------