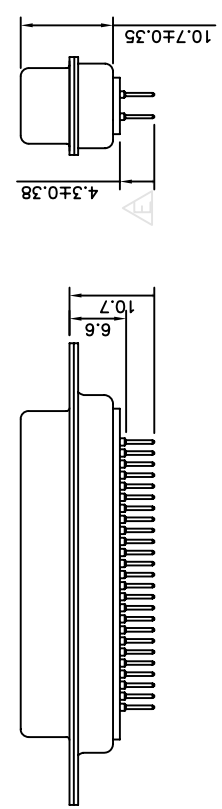
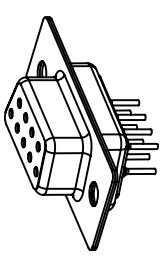


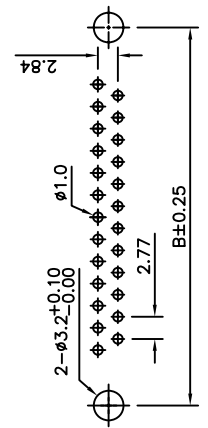
50 POSITIONS

Specifications:  
 Current Rating:3.0A AC,DC  
 Voltage Rating:250V AC,DC  
 Temperature Range:-40°C ~ +85°C  
 Contact Resistance:30mohm max.  
 Insulation Resistance:5,000Mohm min.  
 Withstanding Voltage:1,000V AC/Minute  
 Materials:  
 Insulator:PBT (UL 94V-0)  
 Insulator Color: White  
 Contact :Brass  
 Shell :Steel,Spcc  
 Contact Plating :Selective Gold Plated  
 Shell:Meatal Iron With Nickel Plated

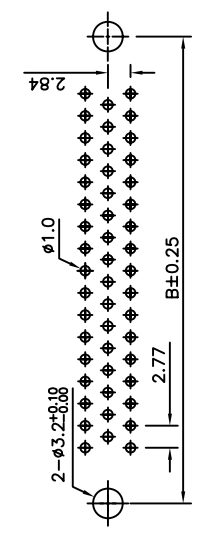


B

Pos	A	B	C	D	E
9	16.33	24.99	30.81	7.90	12.50
15	24.66	33.32	39.14	7.90	12.50
25	38.38	47.04	53.04	7.90	12.50
37	54.84	63.50	69.32	7.90	12.50
50	52.43	61.11	66.93	10.74	15.37



P.C. Board Layout  
(9,15,25,37 Positions)



P.C. Board Layout  
(50 Positions)

RoHS Compliant

REV	DATE	FILE	BY
F			
E			
D			
DRAWN:		GENERAL TOLERANCE: .X=±0.2 .XX=±0.15	
CHECKED:		UNIT: MM	
APPROVAL:		SCALE: 1:1	
		SHEET: 1 / 1	
		PROJECTION:	
		DESCRIPTION: D-SUB Standard Dip PCB Stamp Pin Female	
		PART NO:	
		SIZE <b>A4</b>	

D