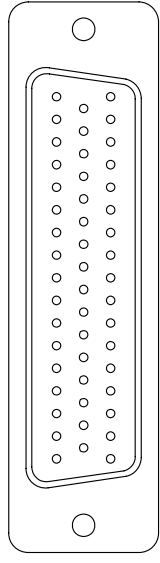
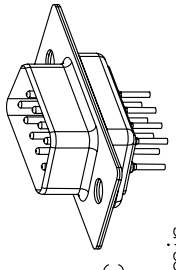
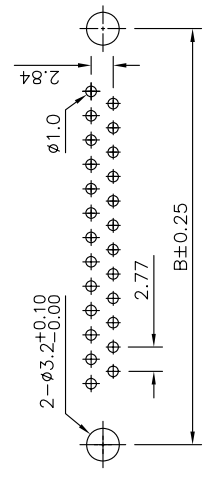
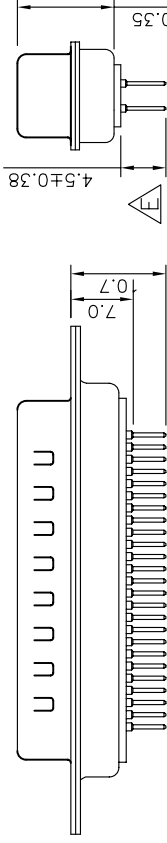
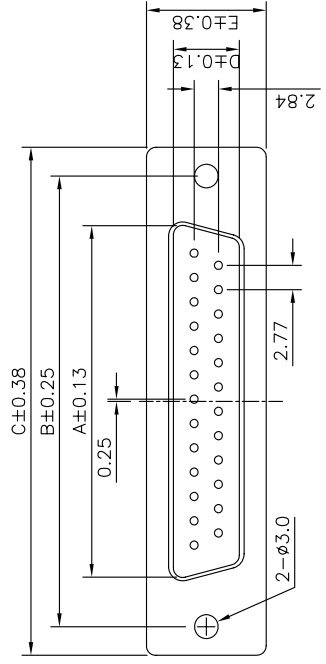


Specifications:
 Current Rating: 3.0A AC, DC
 Voltage Rating: 250V AC, DC
 Temperature Range: $-40^{\circ}\text{C} \sim +85^{\circ}\text{C}$
 Contact Resistance: 30mohm max.
 Insulation Resistance: 5,000Mohm min.
 Withstanding Voltage: 1,000V AC/Minute

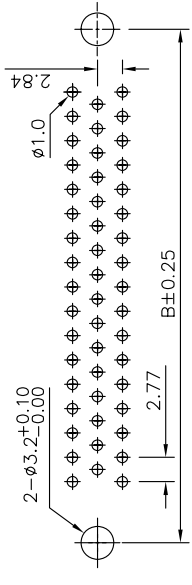
Materials:
 Insulator: PBT (UL 94V-0)
 Insulator Color: White
 Contact: Brass
 Contact Plating: Gold Plated
 Shell: Metal Iron With Nickel Plated



50 POSITIONS



P.C. Board Layout
 (9, 15, 25, 37 Positions)



P.C. Board Layout
 (50 Positions)

Pos	A	B	C	D	E
9	16.92	24.99	30.81	8.38	12.50
15	25.25	33.32	39.14	8.38	12.50
25	38.96	47.04	53.04	8.38	12.50
37	55.42	63.50	69.32	8.38	12.50
50	52.81	61.11	66.93	11.07	15.37

RoHS Compliant

DRAWN:		GENERAL TOLERANCE: .X = ±0.2 .XX = ±0.15	
CHECKED:		UNIT: MM	
APPROVAL:		SCALE: 1:1	
REV	DATE	FILE	BY

DESCRIPTION: D-SUB Standard Dip PCB Stamp Pin Male		SIZE
PART NO:		A4

A

B

C

D